

Holden Herefords

Production Sale

March 16, 2004 - Valier, Montana

Free Lunch at 11:30 a.m.

Sale Starts at 1:00 p.m.

Joe Goggins, Auctioneer
406-245-6447

SELLING

72 Yearling Hereford Bulls

SALE INFORMATION: (406) 279-3300

Jack & Tresha Holden (406) 279-3301
or mobile (406) 450-1029
Jay D Evans (406) 279-3599

SALE DAY PHONE: (406) 279-3300

(406) 450-1029
www.holdenherefords.com
e-mail: jtholden@3rivers.net

SPECIAL GUESTS:

Dale Venhuizen President, American Hereford Association
Dale Spencer Director, American Hereford Association
Jack Evans Director, American Hereford Association
Jack Ward Director of Breed Improvement, American Hereford Association

SALES REPRESENTATIVES:

Jerry Gliko (406) 248-4713 Western Livestock Journal
John Goggins (406) 373-5000 Western Livestock Reporter
Jay George (605) 343-5140 Tri-States Livestock News
Don Rehm (406) 322-4707 Record Stockman
Ben Brillhart (406) 947-2222 AHA Field Representative
Bill Pelton (406) 671-5100 Western Beef Producer

TERMS AND CONDITIONS:

- Each animal will be sold to the highest bidder without reservation.
- The auctioneer will settle any disputes as to bidding and his decision will be final.
- Terms of all sales will be cash unless arrangements are made between purchaser and seller prior to sale.
- Individual health papers will be furnished with each animal permitting shipment to any state.
- In case an adjustment is required, it will be made with a replacement animal of equal value to the animal in question or credit on the purchase of another animal. No adjustments will be made after nine (9) months of sale day on any animals.
- The animal becomes the property of the purchaser as soon as sold but it shall be the responsibility of the seller to see that animals are properly cared for until delivered to the purchaser.
- Any death or injury after the animal is sold is at the buyer's risk.
- Anyone attending this sale attends at their own risk and without liability on the part of the owners or their employees.
- Corrections or additions of any information contained in the sale catalog will be announced from the auction stand and will take precedence over any printed material.

Welcome to Holden Herefords

This is our invitation to you to attend our 38th annual production sale.

Once again, we are pleased to offer an outstanding set of bulls that are uniform and predictable in quality, type, and breeding. This group represents the top 70% of our 2003 calf crop. They are a balanced trait set of bulls that combine thickness, performance, pigment, maternal, fleshing ability, carcass, disposition and moderate birthweight. Their average EPD's are BW +2.8 WW +38 YW +69 Milk +18 M&G +37. They will sell with complete performance and ultrasound data, and as always, fully guaranteed.

Our cow herd is Line One in breeding. We purchased our first Line One cattle over 50 years ago. Since then we have purchased and used many top sires from the Miles City Research Station. We have also exchanged and purchased top herd sires from Cooper Herefords. We have also selected top herd sire prospects from our own herd every year.

We were one of the first members of the Montana Beef Performance Association when it was organized in 1956 and were very active in it until it was dissolved. We have been involved with the TPR program of the American Hereford Association and are active participants in the Whole Herd Reporting Program. These records have been very important in selecting and maintaining the performance and quality of our cattle.

We have a severe culling program for our mother cows. We cull on performance, fertility, soundness, udder quality, and milk. Our cattle are the product of many years of selection for these traits. Our cowherd is our pride and many of the top cows in the breed have come from our ranch.

We have stayed with a strong performance, multi-trait linebreeding program to enhance the predictability of our cattle for our customers. Our

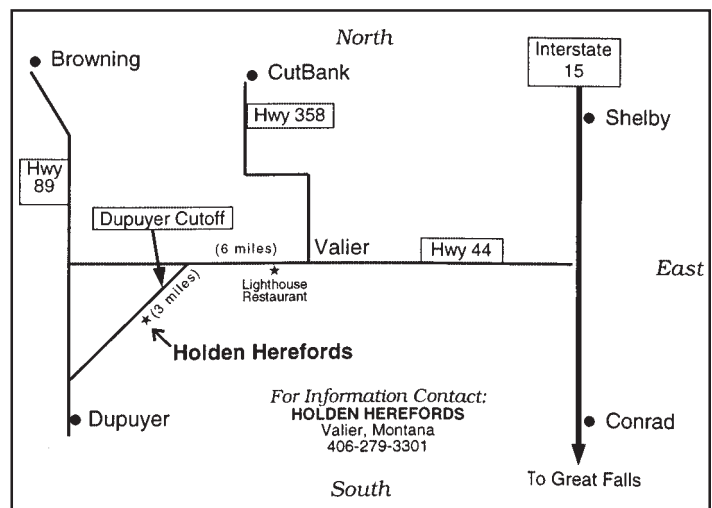
focus has always been on stacking generation after generation of the traits that add value to our customer's bottom line. A linebreeding program can only succeed if you continually add cattle with superior genetics to it. The advantage of our program is the uniformity and predictability it provides along with the heterosis that can be generated by an outcross within the breed or between breeds. These bulls have generations of bred in performance and will pass these traits on to their progeny consistently.

The bulls and cowherd will be on display March 14th, 15th, and 16th for your inspection. Coffee and donuts will be served on March 15th and lunch will be served on sale day. There will be a social hour and dinner at the Lighthouse Restaurant on March 15th from 6:30 to 8:00 p.m. Please come and be our guests.

Thank you for your interest in our program. Please feel free to stop by and inspect the cattle at any time, and if we can help you out in any way, please give us a call.

Jack & Tresha Holden

SALE LOCATION



Holden Herefords is 9 miles west of Valier on the cutoff road to Dupuyer. Take Highway 44 for 6 miles and then the left-hand fork off highway. You can't miss it.



TRAVEL AND ACCOMMODATIONS

Our ranch is 95 miles north of Great Falls, Montana. Great Falls has excellent air terminal service. Listed are some of the motels:

GREAT FALLS AREA:

Fairfield Inn*- 1000 9th Avenue South (406) 454-3000
Comfort Inn*-1120 9th Street (406) 454-2727
Days Inn*-101 14th Avenue NW (406) 727-6565
Ponderosa Inn - 220 Central Avenue (406) 761-3410
Town House Inn - 1411 10th Ave. South (406) 761-4600
Heritage Inn - 1700 Fox Farm Road (406) 761-1900
Holiday Inn - 400 10th Ave. South (406) 727-7200
O'Haire Manor - 17 7 Ave. South (406) 454-2141

CLOSER TO THE RANCH:

Stone School Inn Bed & Breakfast-Valier, MT (406) 279-3796
Inn Dupuyer, Bed & Breakfast - Dupuyer, MT (406) 472-3241
Both B & B's are located about 10 miles from the ranch and are very nice.

OUR RANCH IS ABOUT 40 MILES FROM CONRAD, SHELBY, AND CUT BANK. Some of the accommodations are:

Super 8 Motel - Conrad, MT (406) 278-7676
Comfort Inn* - Shelby, MT (406) 434-2212
Crossroads Inn - Shelby, MT (406) 434-5134
Northern Village Motor Inn - Cut Bank, MT ... (406) 873-5662
Best Western Stage Stop Inn*-Choteau, MT. (406) 466-5900

*New Motels

Please phone and make your own reservations, or call and we will be happy to make them for you.

Valier has a natural turf landing strip for small planes. We will be glad to meet any planes coming into Valier.

DELIVERY

We are offering free delivery to central points within 1,000 mile radius of our ranch on all purchases totaling \$3500 or more.

**There will be a
social hour and
Prime Rib
dinner at the
Lighthouse Restaurant,
1 1/2 miles west
of Valier
on March 15th
from 6:30 to 8:00 p.m.
Please Come And
Be Our Guests!!!**

CONRAD SUPER 8 COMFORT INN - SHELBY

The host motels for the Holden Hereford Sale
HOLDEN HEREFORD BULL SALE SPECIAL
When you register, tell the clerk that you are with the Holden Hereford group and you will receive a 10% discount. For Reservations Call: (406) 278-7676

TOWN HOUSE INNS OF MONTANA

1-800-442-INNS

Town House Inn - Great Falls

Comfort Inn - Shelby

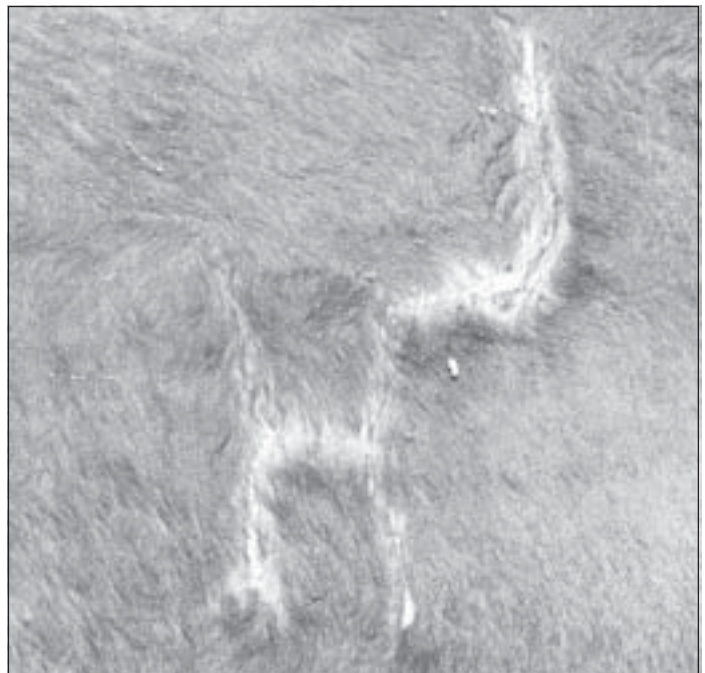
Super 8 - Conrad

ASK FOR THE HOLDEN HEREFORDS DISCOUNT

and receive 10% OFF your Room Rate.

Advance reservations requested

Not valid in conjunction with other discounts





HH MS Advance 786G 1ET
 Daughter of 500E
 Topped our 2001 Female Sale at \$14,500



CL 1 Domino 824H



HH Advance 932J 1ET

CL 1 DOMINO 500E

BD: 1-16-95 ♦ Reg: 19499162 ♦ Tattoo: 500 ♦ Bull

HH ADVANCE 872X
 CL 1 DOMINO 603
 HH MISS ADVANCE 690U
CL 1 DOMINO 166
 19204239
 CL 1 DOMINETTE 8049
 CL 1 DOMINO 590
 MISS ARROW CL 1 4006
 CL 1 COMINO 983
 CL 1 DOMINO 476
 CL 1 DOMINETTE 094
CL 1 DOMINETTE 7013
 18833641
 HH ADVANCE P213
 CL 1 DOMINETTE 527
 CL 1 DOMINETTE 8019

EPD's	
BW	-0.1
WW	+33
YW	+62
Milk	+15
M+G	+31
FT	+0
REA	+49
IMF	-29

♦ "500" is a trait leader for CED, BW, Scrotal, and REA EPD's. He is a proven sire of top sons and has produced some of our top females. One of the original curve bending type bulls that could also sire thickness and muscle in his progeny. "500E" ranks in the top 1% of the breed for REA. The influence of 500E runs deep in our program through his progeny. Owned with Harrell Herefords and Scott & Tracy Downing, OR.

CL 1 DOMINO 824H

BD: 1-17-98 ♦ Reg: 41011011 ♦ Tattoo: 824 ♦ Bull

HH ADVANCE 438D
 HH ADVANCE 249B
 HH MISS ADV 1100A
CL 1 DOMINO 640F
 19564253
 CL 1 DOMINETTE 446
 CL 1 DOMINO 159
 CL 1 DOMINETTE 287
 L1 DOMINO 900234
 L1 DOMINO 920454
 L1 DOMINETTE 850033
CL 1 DOMINETTE 6148F
 19564451
 HH ADVANCE 025Z
 CL 1 DOMNET 2103 1ET
 CL 1 DOMINETTE 691

EPD's	
BW	+3.9
WW	+39
YW	+76
Milk	+25
M+G	+44
FT	+0.1
REA	+0.9
IMF	-1.6

♦ "824H" may be the best female producing bull we have ever used. His daughters are feminine, fertile, perfect uddered, and strong milkers. He is backed by Cooper's best cow families and is a trait leader for Milk, M&G, and Scrotal EPD's. A solid balanced trait performance bull who also sires good sons and has done a great job of replacing himself with 0024K. We are keeping another son of 824H this year to add to his influence in our herd. Owned with Greenough Cattle Co., MT.

HH ADVANCE 932J 1ET

BD: 1-06-99 ♦ Reg: 41114417 ♦ Tattoo: 932 ♦ Bull

CL 1 DOMINO 392
 CL 1 DOMINO 9020
 CL 1 DOMINETTE 7012
HH ADVANCE 6052F
 19562277
 HH MISS ADVANCE 160A-DOD
 HH ADVANCE 9012Y
 HH MISS ADVANCE 907Y
 L1 DOMINO 880243
 L1 DOMINO 910282
 L1 DOMINETTE 850033
HH MS ADVANCE 4054D
 19432382
 HH ADVANCE 078Z
 HH MISS ADVANCE 218B
 HH MISS ADVANCE 005Z-DOD

EPD's	
BW	+4.9
WW	+49
YW	+92
Milk	+17
M+G	+41
FT	+0.3
REA	+0.32
IMF	+0.06

♦ "932J" is a great performance, maternal, and carcass sire. A powerful breeding bull that has exceeded our strong expectations, he is a trait leader for WW, YW, M&G, Scrotal, REA, & IMF EPD's. A full brother is in use at Colyer Herefords, ID, King Herefords, NM and Lone Star Herefords, TX and sired the 2004 Denver Champion Horned Bull for Colyer's. One of the best heifers we have ever calved is out of a flushmate to 932J. Owned with Debter Herefords, AL.



CL 1 Domino 986J



HH Advance 041K 1ET



HH Advance 0024K

CL 1 DOMINO 986J

BD: 1-20-99 ♦ Reg: 41113238 ♦ Tattoo: 986 ♦ Bull

CL 1 DOMINO 166 HH ADVANCE 872X
 CL 1 DOMINETTE 8049
CL 1 DOMINO 5131E CL 1 DOMINO 828
 19499197 CL 1 DOMINETTE 0046
 CL 1 DOMINET 788 2ET
 L1 DOMINO 77618
 CL 1 DOMINO 386 CL 1 DOMINETTE 832
CL 1 DOMINET 496 1ET L1 DOMINO 820673
 19427600 L1 DOMINETTE 850413
 L1 DOMINETTE 810407

EPD's	
BW	+1.1
WW	+26
YW	+55
Milk	+20
M+G	+33
FT	+0.1
REA	+23
IMF	-18

♦ "986" is a trait leader for BW, Milk, CEM, and REA EPD's. He sires progeny with lots of shape, pattern, and muscle. His females are moderate framed, easy doing cows with great udders. His dam was a daughter of the great 386 bull and a top donor for us. Maternal brothers to 986 sell as Lots 338N, 344N, and 367N. Owned with Harrell Herefords, OR and Churchill Herefords, MT.

HH ADVANCE 041K 1ET

BD: 1-06-00 ♦ Reg: 42050160 ♦ Tattoo: 041 ♦ Bull

CL 1 DOMINO 484 L1 DOMINO 890061
 CL 1 DOMINETTE 761
HH ADVANCE 885H CL 1 DOMINO 055 2ET
 41009475 HH MISS ADVANCE 391C
 HH MISS ADV 7011W
 CL 1 DOMINO 392 CL 1 DOMINO 9020
HH MS ADVANCE 5009E CL 1 DOMINETTE 7012
 19501563 HH ADVANCE 9012Y
 HH MISS ADVANCE 271B
 HH MISS ADVANCE 018Z

EPD's	
BW	+4.8
WW	+40
YW	+76
Milk	+19
M+G	+39
FT	+0.1
REA	-0.7
IMF	+1.4

♦ "041K" is a strong breeding bull out of the great 5009E cow that was the dam of our 836H herd sire and produced over \$75,000 worth of progeny. He sires muscle, pigment, volume, and eye appeal in his progeny. The two top sellers in our 2003 sale were both sired by 041K. Owned by W4 Ranch, TX.

HH ADVANCE 0024K

BD: 1-22-00 ♦ Reg: 42050495 ♦ Tattoo: 0024 ♦ Bull

CL 1 DOMINO 640F HH ADVANCE 438D
 CL 1 DOMINETTE 446
CL 1 DOMINO 824H L1 DOMINO 920454
 41011011 CL 1 DOMINETTE 6148F
 CL 1 DOMNET 2103 1ET
 GB L1 DOMINO 804
 CL 1 DOMINO 403 1ET L1 DOMINETTE 850413
HH MISS ADVANCE 894H HH ADVANCE 125A
 41009482 HH MS ADV 4045D 4ET
 HH MISS ADVANCE M084

EPD's	
BW	+2.7
WW	+43
YW	+87
Milk	+21
M+G	+43
FT	-0.1
REA	+38
IMF	-2.1

♦ "0024K" has proved to be a great all around breeding bull. He is a heavily pigmented, moderate framed bull that is loaded with red meat. He consistently sires strong performing calves that are just like him. He is very easy calving and has been used on heifers for the past 3 years. He ranks in the top 20% of the breed for WW and CEM EPD's and FT EPD's, and in the top 8% or better for Milk, Scrotal, YW, M&G and REA EPD's. "0024K" sired the top placing carcass steer in the Montana Junior Hereford Association CHB steer contest. Owned with EE Ranches, KS and MS.



HH Advance 145L



CL 1 Domino 180L



L1 Domino 99496

HH ADVANCE 145L

BD: 1-07-01 ♦ Reg: 42151076 ♦ Tattoo: 145 ♦ Bull

CL 1 DOMINO 392
HH ADVANCE 6052F
 19562277
 HH MISS ADVANCE 160A
 CL 1 DOMINO 484
HH MISS ADVANCE 766G
 40007279
 HH MS ADVANCE 5010E
 CL 1 DOMINO 9020
 CL 1 DOMINETTE 7012
 HH ADVANCE 9012Y
 HH MISS ADVANCE 907Y
 L1 DOMINO 890061
 CL 1 DOMINETTE 761
 HH ADVANCE 249B
 HH MISS ADVANCE 305C

EPD's	
BW	+3.0
WW	+36
YW	+71
Milk	+17
M+G	+35
FT	+0.02
REA	+0.06
IMF	+0.21

♦ A big, long, clean made 6052F son with very solid EPD's. He is positive on both REA and IMF EPD's. "145L" was the second high selling bull in our 2002 sale at \$24,000 and we liked him so much, we bought half of him back. His dam was the 3rd high selling female in our 2001 cow sale to Meitler Herefords, and his maternal granddam is a donor for Curtis Curry. Owned with Nunnally Farms, GA.

CL 1 DOMINO 180L

BD: 1-16-01 ♦ Reg: 42150351 ♦ Tattoo: 180 ♦ Bull

CL 1 DOMINO 500E
HH ADVANCE 767G 1ET
 40007386
 HH MISS ADVANCE 251B
 CL 1 DOMINO 371
CL 1 DOMINETTE 6113F
 19564439
 CL 1 DOMINETTE 0070
 CL 1 DOMINO 166
 CL 1 DOMINETTE 7013
 HH ADVANCE 9012Y
 HH MISS ADVANCE 063Z
 HH ADVANCE 125A
 CL 1 DOMINETTE 946
 ARROW CL1 DOM 7068
 CL 1 DOMINETTE 547

EPD's	
BW	+1.2
WW	+43
YW	+81
Milk	+20
M+G	+42
FT	+0.01
REA	+0.04
IMF	+0.06

♦ "180L" is a top son of the great curve bending 767G bull used at Cooper's. He has outstanding EPD's across the board and had our top sire group on weaning weight. He is backed by a great cow family and was very complete in his pattern. "180" is a great curve-bender type bull that also has strong maternal and carcass.

L1 DOMINO 99496

BD: 4-17-99 ♦ Reg: 41170444 ♦ Tattoo: 99496 ♦ Bull

L1 DOMINO 95430
L1 DOMINO 97349
 40046558
 L1 DOMINETTE 93451
 L1 DOMINO 93572
L1 DOMINETTE 95369
 19515067
 L1 DOMINETTE 93544
 L1 DOMINO 920501
 L1 DOMINETTE 900391
 L1 DOMINO 910079
 L1 DOMINETTE 910390
 L1 DOMINO 910026
 L1 DOMINETTE 860107
 L1 DOMINO 900308
 L1 DOMINETTE 900388

EPD's	
BW	+3.0
WW	+34
YW	+65
Milk	+11
M+G	+28
FT	+0
REA	+0.01
IMF	-0.07

♦ "99496" is a powerful Miles City bull that we feel is one of the best they have produced. He sires moderate framed sons with exceptional thickness and volume. His daughters are feminine, easy fleshing females. He is sired by the \$21,000 97349 bull owned by D-Bar Herefords and backed by 2 of the top cow families at Miles City. We purchased his dam and paternal granddam, and they are both in our donor program. Owned with Cooper Herefords and Debter Herefords.

Sires

CL 1 DOMINO 0100K

BD: 1-22-00 ♦ Reg: 42044437 ♦ Tattoo: 0100 ♦ Bull

	L1 DOMINO 93469																			
L1 DOMINO 95461	L1 DOMINETTE 880467																			
CL 1 DOMINO 888H 1ET 41011071	CL 1 DOMINO 828	<table border="1"> <thead> <tr> <th colspan="2">EPD's</th> </tr> </thead> <tbody> <tr> <td>BW</td> <td>+3.9</td> </tr> <tr> <td>WW</td> <td>+36</td> </tr> <tr> <td>YW</td> <td>+55</td> </tr> <tr> <td>Milk</td> <td>+19</td> </tr> <tr> <td>M+G</td> <td>+37</td> </tr> <tr> <td>FT</td> <td>-.01</td> </tr> <tr> <td>REA</td> <td>+.01</td> </tr> <tr> <td>IMF</td> <td>+.01</td> </tr> </tbody> </table>	EPD's		BW	+3.9	WW	+36	YW	+55	Milk	+19	M+G	+37	FT	-.01	REA	+.01	IMF	+.01
EPD's																				
BW	+3.9																			
WW	+36																			
YW	+55																			
Milk	+19																			
M+G	+37																			
FT	-.01																			
REA	+.01																			
IMF	+.01																			
CL 1 DOMINETTE 178	CL 1 DOMINETTE 3013																			
HH ADVANCE 438D	HH ADVANCE 249B																			
	HH MISS ADV 1100A																			
CL 1 DOMINETTE 717G ET 40013836	CL 1 DOMINO 476																			
CL 1 DOMINETTE 7013	CL 1 DOMINETTE 527																			

♦ "0100K" is a well marked, thick made 888 son . He sires well balanced progeny that are very complete. His dam is a maternal sister to our 500E herd sire and has full pigment on her teats.



CL 1 Domino 0124K

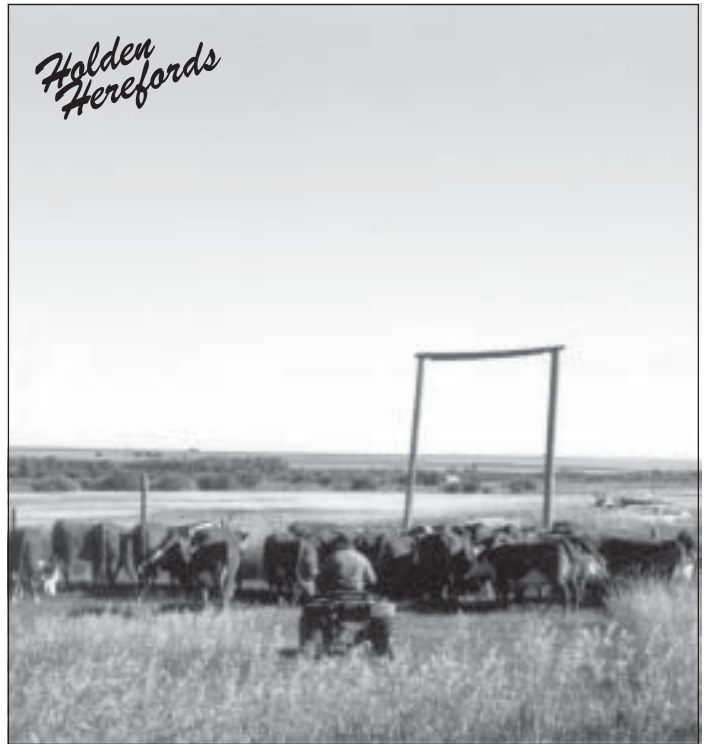
CL 1 DOMINO 0124K 1ET

BD: 1-25-00 ♦ Reg: 42044461 ♦ Tattoo: 0124K ♦ Bull

	L1 DOMINO 93469																			
L1 DOMINO 95461	L1 DOMINETTE 880467																			
CL 1 DOMINO 888H 1ET 41011071	CL 1 DOMINO 828	<table border="1"> <thead> <tr> <th colspan="2">EPD's</th> </tr> </thead> <tbody> <tr> <td>BW</td> <td>+2.7</td> </tr> <tr> <td>WW</td> <td>+26</td> </tr> <tr> <td>YW</td> <td>+48</td> </tr> <tr> <td>Milk</td> <td>+14</td> </tr> <tr> <td>M+G</td> <td>+27</td> </tr> <tr> <td>FT</td> <td>+0</td> </tr> <tr> <td>REA</td> <td>+.04</td> </tr> <tr> <td>IMF</td> <td>+.01</td> </tr> </tbody> </table>	EPD's		BW	+2.7	WW	+26	YW	+48	Milk	+14	M+G	+27	FT	+0	REA	+.04	IMF	+.01
EPD's																				
BW	+2.7																			
WW	+26																			
YW	+48																			
Milk	+14																			
M+G	+27																			
FT	+0																			
REA	+.04																			
IMF	+.01																			
CL 1 DOMINETTE 178	CL 1 DOMINETTE 3013																			
HH ADVANCE 011Z	CL 1 DOMINO 843																			
	HH MISS ADV 8019X																			
CL 1 DOMINET 357 19354960	CL 1 DOMINO 626 1ET																			
CL 1 DOMINET 885 2ET	CL 1 DOMINETTE 279																			

♦ "0124" is a freckle faced, heavy muscled bull with lots of fleshing ability. He sires moderate framed, easy doing progeny with solid performance and carcass. His first daughters are in production and look to be outstanding females. Dam was a top donor cow for Coopers.

Coffee and donuts will be served on March 15th & 16th. Lunch will be served on sale day.



*HH Miss Advance 730G
Dam of Lot 3130N and Granddam of Lot 389N*



*HH Miss Advance 621F
Granddam of Lots 348N & 361N*

Sale Bulls

SALE BULLS...

This group of sale bulls are the top 72 out of 92 head. They are an outstanding group in terms of thickness, pattern, performance, disposition, and EPD's. They are also extremely impressive in their overall uniformity and depth of quality. We will have complete ultrasound and scrotal data available at sale time. The average EPD's on the sale bulls are BW +2.9 WW +38 YW +69 Milk +18 M&G +37. Breed average for 2002 born calves is BW +3.8 WW +35 YW +60 Milk +13 M&G +31. Almost 85% of the bulls in the sale are below breed average for BW EPD, over 85% are breed average or higher for YW EPD, and 97% are above breed average for Milk and M&G EPD's. The bulls were developed on a GTA Feeds pellet called Bull Challenger. It is a low fat- high fiber feed. They gained 3.4 lbs a day on a 140 day gain test and have an average adj. 365 day wt of 1230 lbs. They had an average weaning weight of 675 lbs on August 24, 2003 with no creep feed.

Holden Herefords

Lot 319N HH ADVANCE 319N

BD: 1-07-03 ♦ Reg: 42370246 ♦ Tattoo: 319 ♦ Bull

L1 DOMINO 95461
CL 1 DOMINO 888H 1ET
CL 1 DOMINETTE 178
CL 1 DOMINO 0100K
42044437
HH ADVANCE 438D
CL 1 DOMINETTE 717G ET
CL 1 DOMINETTE 7013
HH ADVANCE 311C
KB L1 DOMINO 519
CL 1 DOMINETTE 6008
HH MS ADVANCE 8039H
41009526
HH ADVANCE 200B
HH MISS ADVANCE 450D
HH MISS ADVANCE 271B

EPD's	
BW	+3.5
WW	+37
YW	+56
Milk	+18
M+G	+36
FT	+0
REA	+0.03
IMF	+0.1

BW	Adj 205	NR	Adj 365	YR
94	718	107	1192	97

♦ "319N" is a big, long heavily pigmented bull out of a top cow family. He has balanced EPD's and is positive for REA and IMF EPD's. Maternal granddam is a maternal sister to the 5009E cow that produced the 836H and 041K herd sires.

Holden Herefords

Lot 308N HH ADVANCE 308N

BD: 1-05-03 ♦ Reg: 42370129 ♦ Tattoo: 308 ♦ Bull

CL 1 DOMINO 500E
HH ADVANCE 767 G 1ET
HH MISS ADVANCE 251B
CL 1 DOMINO 180L
42150351
CL 1 DOMINO 371
CL 1 DOMINETTE 6113F
CL 1 DOMINETTE 0070
HH ADVANCE 6052F
HH ADVANCE 932J 1ET
HH MS ADVANCE 4054D
HH MISS ADVANCE 194L
42151249
HH ADVANCE 5029E
HH MS ADVANCE 8042H
HH MS ADVANCE 5016E

EPD's	
BW	+1.6
WW	+38
YW	+71
Milk	+18
M+G	+37
FT	+0.02
REA	+0.02
IMF	+0.08

BW	Adj 205	NR	Adj 365	YR
83	650	97	1193	97

♦ Heifer bull prospect that has great Calving Ease and BW EPD's, is positive on REA and IMF EPD's, and out of a good cow family.



HH Advance 321N 1ET

Holden Herefords

Lot 312N HH ADVANCE 312N

BD: 1-06-03 ♦ Reg: 42370163 ♦ Tattoo: 312 ♦ Bull

CL 1 DOMINO 166
CL 1 DOMINO 500E
CL 1 DOMINETTE 7013
HH ADVANCE 8060H 1ET
41009546
L1 REDMAN ET
HH MISS ADVANCE 182A
HH MISS ADVANCE 665U
HH ADVANCE 403D 3ET
HH ADVANCE 671F 1ET
HH MISS ADVANCE 063Z
HH MS ADV 870H 1ET
41009461
HH ADVANCE 9012Y
HH MISS ADVANCE 339C
HH MISS ADVANCE 646U

EPD's	
BW	+3.0
WW	+34
YW	+62
Milk	+17
M+G	+34
FT	+0.01
REA	+0
IMF	+0.03

BW	Adj 205	NR	Adj 365	YR
93	661	98	1238	101

♦ "312N" is a well balanced prospect with strong EPD's and solid performance. He is well marked and stout made. Dam is the maternal granddam of the Lot 399N bull that is on the cover and goes back to the great 339C cow that has produced so many top females for us.

Holden Herefords

Lot 321N HH ADVANCE 321N 1ET

BD: 1-07-03 ♦ Reg: 42370253 ♦ Tattoo: 321 ♦ Bull

L1 DOMINO 95461
CL 1 DOMINO 888H 1ET
CL 1 DOMINETTE 178
CL 1 DOMINO 0100K
42044437
HH ADVANCE 438D
CL 1 DOMINETTE 717G ET
CL 1 DOMINETTE 7013
L1 DOMINO 860274
XP L1 DOMINO 90085
L1 DOMINETTE 850601
HH MS ADV 898H 1ET
41009486
HH ADVANCE 9012Y
HH MISS ADVANCE 251B
HH MISS ADVANCE 063Z

EPD's	
BW	+3.4
WW	+38
YW	+62
Milk	+17
M+G	+36
FT	+0
REA	-0.02
IMF	+0.07

BW	Adj 205	NR	Adj 365	YR
94	698	ET	1304	ET

♦ "321N" is a powerful herd bull prospect. He combines tremendous thickness, rib, length, and pigment with loads of eye appeal. Dam is a top donor cow that has an average NR of 110 and an average YR of 109. She is a full sister to the 8017H herd sire used by us, and a daughter of the \$19,000 251B cow that Perks bought in our 1997 cow sale. A maternal brother to "321N" sold in our 2002 sale to Spencer Herefords, NE.

Holden
Herefords

Lot 327N

HH ADVANCE 327N 1ET

BD: 1-09-03 ♦ Reg: 42370258 ♦ Tattoo: 327 ♦ Bull

HH ADVANCE 438D
 CL 1 DOMINO 640F
 CL 1 DOMINETTE 446
CL 1 DOMINO 824H
 41011011 L1 DOMINO 920454
 CL 1 DOMINETTE 6148F
 CL 1 DOMNET 2103 1ET
 L1 DOMINO 3704 1ET
 HH ADVANCE 5029E
 HH MS ADVANCE 3016C
HH MS ADV 7005G 1ET
 40007395 HH ADVANCE P224
 HH MISS ADVANCE 507T
 HH MISS ADVANCE N198

EPD's	
BW	+3.5
WW	+34
YW	+65
Milk	+22
M+G	+39
FT	+0.1
REA	-0.09
IMF	-0.05

BW	Adj 205	NR	Adj 365	YR
98	600	ET	1269	ET



HH Advance 338N 1ET

♦ "327N" was on a crippled recip cow and pretty much had to raise himself to weaning. He has really turned on the jets on test. If you are looking for a cowherd builder, he would have to be a top choice. He ranks in the top 5% of the breed for Milk EPD and the top 15% for M&G EPD's. His dam is a super uddered, heavy milking donor cow out of a great cow family. Maternal brothers sell as Lots 3105N, 3146N, and 3179N.

Holden
Herefords

Lot 334N

HH ADVANCE 334N

BD: 1-10-03 ♦ Reg: 42370263 ♦ Tattoo: 334 ♦ Bull

CL 1 DOMINO 640F
 CL1 DOMINO 824H
 CL 1 DOMINETTE 6148F
HH ADVANCE 0024K
 42050495 CL 1 DOMINO 403 1ET
 HH MISS ADVANCE 894H
 HH MS ADV 4045D 4ET
 HH ADVANCE 5029E
 HH ADVANCE 836H
 HH MS ADVANCE 5009E
HH MISS ADVANCE 198L
 42151253 CL 1 DOMINO 500E
 HH MS ADVANCE 7024G
 HH MS ADVANCE 4043D

EPD's	
BW	+3.4
WW	+39
YW	+75
Milk	+18
M+G	+37
FT	+0.1
REA	+1.16
IMF	-0.08

BW	Adj 205	NR	Adj 365	YR
95	666	99	1295	106



CL 1 Dominet 496 1ET
Dam of Lots 338N, 344N and 367N
Dam of Herd Sire CL 1 Domino 986J

♦ "334N" is an big topped, thick butted bull with plenty of rib and volume and still easy on the eye. He has an excellent set of EPD's and really performed well on test. Both his maternal granddam and great granddam were donor cows for us.

Holden
Herefords

Lot 335N

HH ADVANCE 335N

BD: 1-11-03 ♦ Reg: 42370264 ♦ Tattoo: 335 ♦ Bull

CL 1 DOMINO 166
 CL 1 DOMINO 500E
 CL 1 DOMINETTE 7013
HH ADVANCE 8060H 1ET
 41009546 L1 REDMAN ET
 HH MISS ADVANCE 182A
 HH MISS ADVANCE 665U
 CL 1 DOMINO 392
 HH ADVANCE 6052F
 HH MISS ADVANCE 160A
HH MS ADVANCE 8032H
 41009519 HH ADVANCE 185A
 HH MS ADVANCE 5018E
 HH MISS ADVANCE 142A

EPD's	
BW	+3.0
WW	+34
YW	+62
Milk	+15
M+G	+32
FT	+0.1
REA	+0.05
IMF	+0.03

BW	Adj 205	NR	Adj 365	YR
94	660	98	1249	102

♦ Big, long growthy bull with extra pigment and muscle. "335N" is another balanced trait bull that is positive for REA and IMF EPD's.

Holden
Herefords

Lot 338N

HH ADVANCE 338N 1ET

BD: 1-11-03 ♦ Reg: 42370267 ♦ Tattoo: 338 ♦ Bull

CL 1 DOMINO 640F
 CL1 DOMINO 824H
 CL 1 DOMINETTE 6148F
HH ADVANCE 0024K
 42050495 CL 1 DOMINO 403 1ET
 HH MISS ADVANCE 894H
 HH MS ADV 4045D 4ET
 L1 DOMINO 77618
 CL 1 DOMINO 386
 CL 1 DOMINETTE 832
CL 1 DOMINET 496 1ET
 19427600 L1 DOMINO 820673
 L1 DOMINETTE 850413
 L1 DOMINETTE 810407

EPD's	
BW	+2.1
WW	+34
YW	+67
Milk	+23
M+G	+40
FT	+0
REA	+0.27
IMF	-0.17

BW	Adj 205	NR	Adj 365	YR
99	736	ET	1250	ET

♦ "338N" is a top herd bull prospect out of the great 496 Cooper cow and 0024K. He is extremely big topped, well marked, clean fronted, and has lots of muscle expression. He is well below breed average for BW EPD, ranks in the top 6% of the breed for REA and Milk EPD's, and the top 10% for M&G EPD. Full brothers sell as Lots 344N and 367N.

"We have stayed with a strong performance, multi-trait linebreeding program to enhance the predictability of our cattle for our customers."

Holden Herefords

Lot 347N
HH ADVANCE 347N

BD: 1-13-03 ♦ Reg: 42370276 ♦ Tattoo: 347 ♦ Bull

HH ADVANCE 438D
 CL 1 DOMINO 640F
 CL 1 DOMINETTE 446
 CL 1 DOMINO 824H
 41011011 L1 DOMINO 920454
 CL 1 DOMINETTE 6148F
 CL 1 DOMNET 2103 1ET
 CL 1 DOMINO 166
 CL 1 DOMINO 500E
 CL 1 DOMINETTE 7013
 HH MS ADVANCE 8046H
 41009533 HH ADVANCE 249B
 HH MISS ADVANCE 694F
 HH MISS ADVANCE 474D

EPD's	
BW	+3.0
WW	+36
YW	+68
Milk	+21
M+G	+39
FT	+0.1
REA	+0.10
IMF	-0.13

BW	Adj 205	NR	Adj 365	YR
97	674	100	1165	95

♦ "347N" is a well marked, high maternal bull out of an easy doing 500E daughter that has an average NR of 104. He broke a horn while on test and it slowed him down a little. A maternal brother is in use at Curry Herefords, OK.



HH Advance 341N 1ET

Holden Herefords

Lot 341N
HH ADVANCE 341N 1ET

BD: 1-12-03 ♦ Reg: 42370270 ♦ Tattoo: 341 ♦ Bull

CL 1 DOMINO 484
 HH ADVANCE 885H
 HH MISS ADVANCE 391C
 HH ADVANCE 041K 1ET
 42050160 CL 1 DOMINO 392
 HH MS ADVANCE 5009E
 HH MISS ADVANCE 271B
 HH ADVANCE 710W
 HH ADVANCE 078Z
 HH MISS ADVANCE 682U
 HH MISS ADVANCE 415D
 19432250 CL 1 DOMINO 603
 HH MISS ADVANCE 047Z
 HH MISS ADVANCE 527T

EPD's	
BW	+4.5
WW	+36
YW	+65
Milk	+17
M+G	+35
FT	+0.1
REA	+0.05
IMF	+0.11

BW	Adj 205	NR	Adj 365	YR
97	724	ET	1284	ET

♦ Strong performing herd bull prospect with extra rib, volume, muscle, and great carcass EPD's. "341N" is well marked and out of an easy fleshing, great uddered donor cow.

Holden Herefords

Lot 348N
HH ADVANCE 348N 1ET

BD: 1-13-03 ♦ Reg: 42370277 ♦ Tattoo: 348 ♦ Bull

CL 1 DOMINO 484
 HH ADVANCE 885H
 HH MISS ADVANCE 391C
 HH ADVANCE 041K 1ET
 42050160 CL 1 DOMINO 392
 HH MS ADVANCE 5009E
 HH MISS ADVANCE 271B
 L1 DOMINO 3704 1ET
 HH ADVANCE 5029E
 HH MS ADVANCE 3016C
 HH MISS ADVANCE 9028J
 41114507 CL 1 DOMINO 484
 HH MISS ADVANCE 621F
 HH MISS ADV 402D 1ET

EPD's	
BW	+3.7
WW	+36
YW	+68
Milk	+19
M+G	+37
FT	+0.02
REA	-0.16
IMF	+0.08

BW	Adj 205	NR	Adj 365	YR
94	662	ET	1233	ET

♦ Coon eyed, thick made herd bull prospect out of a top cow. "348N" is backed by a lot of top producing cows and has 3 donors on the bottom side of his pedigree. He has solid EPD's and performance across the board.

Holden Herefords

Lot 344N
HH ADVANCE 344N 1ET

BD: 1-13-03 ♦ Reg: 42370273 ♦ Tattoo: 344 ♦ Bull

CL 1 DOMINO 640F
 CL1 DOMINO 824H
 CL 1 DOMINETTE 6148F
 HH ADVANCE 0024K
 42050495 CL 1 DOMINO 403 1ET
 HH MISS ADVANCE 894H
 HH MS ADV 4045D 4ET
 L1 DOMINO 77618
 CL 1 DOMINO 386
 CL 1 DOMINETTE 832
 CL 1 DOMINET 496 1ET
 19427600 L1 DOMINO 820673
 L1 DOMINETTE 850413
 L1 DOMINETTE 810407

EPD's	
BW	+2.1
WW	+34
YW	+67
Milk	+23
M+G	+40
FT	+0
REA	+0.27
IMF	-0.17

BW	Adj 205	NR	Adj 365	YR
92	712	ET	1261	ET

♦ "344N" is a square made, clean fronted herd bull prospect with 100% pigment and lots of eye appeal. He is a no holes prospect that ranks in the top 6% of the breed for Milk and REA EPD's and the top 10% for M&G EPD's. Dam is a top 386 daughter who has left a strong influence in both Cooper's and our herd with both her sons and daughters. Full brothers sell as Lots 338N and 367N.



HH Advance 344N 1ET

Holden Herefords

Lot 349N

HH ADVANCE 349N

BD: 1-13-03 ♦ Reg: 42370278 ♦ Tattoo: 349 ♦ Bull

L1 DOMINO 95430
 L1 DOMINO 97349
 L1 DOMINETTE 93451
 L1 DOMINO 99496
 41170444
 L1 DOMINO 93572
 L1 DOMINETTE 95369
 L1 DOMINETTE 93544
 CL 1 DOMINO 392
 HH ADVANCE 6052F
 HH MISS ADVANCE 160A
 HH MISS ADVANCE 097K
 42050324
 HH ADVANCE 078Z
 HH MISS ADVANCE 353C
 HH MISS ADVANCE 063Z

EPD's	
BW	+2.9
WW	+35
YW	+62
Milk	+9
M+G	+26
FT	+0.1
REA	+0.04
IMF	+0.04

BW	Adj 205	NR	Adj 365	YR
90	644	96	1215	99

♦ Excellent eye appeal and muscle expression in this 99496 son. Dam is a feminine, long bodied cow with a beautiful udder. Note the great 063Z cow on the bottom of the pedigree.



HH Advance 361N

Holden Herefords

Lot 354N

HH ADVANCE 354N

BD: 1-14-03 ♦ Reg: 42370282 ♦ Tattoo: 354 ♦ Bull

CL 1 DOMINO 166
 CL 1 DOMINO 5131E
 CL 1 DOMINETTE 0046
 CL 1 DOMINO 986J
 41113238
 CL 1 DOMINO 386
 CL 1 DOMINET 496 1ET
 L1 DOMINETTE 850413
 CL 1 DOMINO 484
 HH ADVANCE 885H
 HH MISS ADVANCE 391C
 HH MISS ADVANCE 106L
 42151005
 CL 1 DOMINO 6103F
 HH MISS ADVANCE 943J
 HH MISS ADVANCE 741G

EPD's	
BW	+0
WW	+27
YW	+52
Milk	+20
M+G	+33
FT	+0.1
REA	-0.1
IMF	-0.06

BW	Adj 205	NR	Adj 365	YR
78	630	94	1173	96

♦ Light birth weight heifer bull prospect that also is strong maternally. "354N" ranks in the top 5% of the breed for BW and Maternal Calving Ease EPD's.

Holden Herefords

Lot 361N

HH ADVANCE 361N 1ET

BD: 1-15-03 ♦ Reg: 42370289 ♦ Tattoo: 361 ♦ Bull

CL 1 DOMINO 484
 HH ADVANCE 885H
 HH MISS ADVANCE 391C
 HH ADVANCE 041K 1ET
 42050160
 CL 1 DOMINO 392
 HH MS ADVANCE 5009E
 HH MISS ADVANCE 271B
 L1 DOMINO 3704 1ET
 HH ADVANCE 5029E
 HH MS ADVANCE 3016C
 HH MISS ADVANCE 9028J
 41114507
 CL 1 DOMINO 484
 HH MISS ADVANCE 621F
 HH MISS ADV 402D 1ET

EPD's	
BW	+3.7
WW	+36
YW	+68
Milk	+19
M+G	+37
FT	+0.2
REA	-0.16
IMF	+0.08

BW	Adj 205	NR	Adj 365	YR
98	728	ET	1294	ET

♦ Top herd bull prospect. "361N" displays exceptional volume, rib and muscle along with strong performance. He is short marked and backed by a top cow family that goes back to the S415 cow that was one of our best producers ever.

Holden Herefords

Lot 360N

HH ADVANCE 360N

BD: 1-15-03 ♦ Reg: 42370288 ♦ Tattoo: 360 ♦ Bull

CL 1 DOMINO 640F
 CL1 DOMINO 824H
 CL 1 DOMINETTE 6148F
 HH ADVANCE 0024K
 42050495
 CL 1 DOMINO 403 1ET
 HH MISS ADVANCE 894H
 HH MS ADV 4045D 4ET
 CL 1 DOMINO 392
 HH ADVANCE 6052F
 HH MISS ADVANCE 160A
 HH MISS ADVANCE 115L
 42151040
 CL 1 DOMINO 484
 HH MISS ADVANCE 607F
 HH MS ADVANCE 4031D

EPD's	
BW	+2.1
WW	+41
YW	+76
Milk	+21
M+G	+41
FT	+0.1
REA	+0.30
IMF	-0.02

BW	Adj 205	NR	Adj 365	YR
86	725	108	1319	108

♦ "360N" is a super all around herd bull prospect. He combines well below breed average BW EPD with YW, Milk, M&G, and REA EPD's that rank in the top 10% of the breed or better. He backs it up with tremendous individual performance, excellent pigment, and a flawless phenotype. His dam is a full sister to the 063K bull in use at Cooper's and a great young female.



HH Advance 360N

Holden Herefords

Lot 364N
HH ADVANCE 364N

BD: 1-16-03 ♦ Reg: 42370292 ♦ Tattoo: 364 ♦ Bull

	CL 1 DOMINO 640F	
	CL1 DOMINO 824H	
	CL 1 DOMINETTE 6148F	
HH ADVANCE 0024K		
42050495	CL 1 DOMINO 403 1ET	
	HH MISS ADVANCE 894H	
	HH MS ADV 4045D 4ET	
	CL 1 DOMINO 392	
	HH ADVANCE 6052F	
	HH MISS ADVANCE 160A	
HH MISS ADVANCE 114L		
42151038	HH ADVANCE 5029E	
	HH MISS ADVANCE 715G	
	HH MS ADVANCE 5027E	

BW	Adj 205	NR	Adj 365	YR
87	672	100	1238	101

EPD's	
BW	+3.1
WW	+40
YW	+75
Milk	+17
M+G	+37
FT	+0.1
REA	+0.16
IMF	-0.05

♦ Moderate birth weight bull with strong performance and great EPD's. "364N" is clean, thick, long, and red.



HH Advance 367N 1ET

Holden Herefords

Lot 367N
HH ADVANCE 367N 1ET

BD: 1-17-03 ♦ Reg: 42370295 ♦ Tattoo: 367 ♦ Bull

	CL 1 DOMINO 640F	
	CL1 DOMINO 824H	
	CL 1 DOMINETTE 6148F	
HH ADVANCE 0024K		
42050495	CL 1 DOMINO 403 1ET	
	HH MISS ADVANCE 894H	
	HH MS ADV 4045D 4ET	
	L1 DOMINO 77618	
	CL 1 DOMINO 386	
	CL 1 DOMINETTE 832	
CL 1 DOMINET 496 1ET		
19427600	L1 DOMINO 820673	
	L1 DOMINETTE 850413	
	L1 DOMINETTE 810407	

BW	Adj 205	NR	Adj 365	YR
99	696	ET	1205	ET

EPD's	
BW	+2.1
WW	+34
YW	+67
Milk	+23
M+G	+40
FT	+0
REA	+0.27
IMF	-0.17

♦ Coon eyed herd bull prospect by the Cooper 496 cow. "367N" exhibits lots of rib, muscle, and shape and has an outstanding set of EPD's. Full brothers sell as Lots 338N and 344N.

"Thank you for your interest in our program. Please feel free to stop by and inspect the cattle at any time, and if we can help you out in any way, please give us a call."

Holden Herefords

Lot 368N
HH ADVANCE 368N

BD: 1-17-03 ♦ Reg: 42370296 ♦ Tattoo: 368 ♦ Bull

	CL 1 DOMINO 640F	
	CL1 DOMINO 824H	
	CL 1 DOMINETTE 6148F	
HH ADVANCE 0024K		
42050495	CL 1 DOMINO 403 1ET	
	HH MISS ADVANCE 894H	
	HH MS ADV 4045D 4ET	
	CL 1 DOMINO 500E	
	HH ADVANCE 8060E	
	HH MISS ADVANCE 182A	
HH MISS ADVANCE 1124L		
Reg	CL 1 DOMINO 7012G ET	
	HH MISS ADVANCE 964J	
	HH MISS ADVANCE 711G	

BW	Adj 205	NR	Adj 365	YR
90	638	95	1169	95

EPD's	
BW	+3.0
WW	+36
YW	+69
Milk	+18
M+G	+36
FT	-0.1
REA	-0.12
IMF	-0.19

♦ "368N" is a moderate framed, thick made bull with extra pigment. He has a strong balanced set of EPD's.

Holden Herefords

Lot 373N
HH ADVANCE 373N

BD: 1-17-03 ♦ Reg: 42370301 ♦ Tattoo: 373 ♦ Bull

	CL 1 DOMINO 500E	
	HH ADVANCE 767 G 1ET	
	HH MISS ADVANCE 251B	
CL1 DOMINO 180L		
42150351	CL 1 DOMINO 371	
	CL 1 DOMINETTE 6113F	
	CL 1 DOMINETTE 0070	
	CL 1 DOMINO 640F	
	CL 1 DOMINO 824H	
	CL 1 DOMINETTE 6148F	
HH MISS ADVANCE 142L ET		
42151073	CL 1 DOMINO 392	
	HH MISS ADVANCE 583E	
	HH MISS ADVANCE 284B	

BW	Adj 205	NR	Adj 365	YR
85	693	103	1259	103

EPD's	
BW	+2.4
WW	+42
YW	+81
Milk	+20
M+G	+41
FT	+0.1
REA	+0.08
IMF	-0.03

♦ Moderate birth weight herd bull prospect with powerful EPD's that rank him in the top 10% of the breed or better for Calving Ease, YW, M&G, and Scrotal EPD's. "373N" is long bodied, smooth shouldered, and has plenty of muscle.

Holden Herefords

Lot 376N
HH ADVANCE 376N

BD: 1-17-03 ♦ Reg: 42370304 ♦ Tattoo: 376 ♦ Bull

	CL 1 DOMINO 166	
	CL 1 DOMINO 5131E	
	CL 1 DOMINETTE 0046	
CL 1 DOMINO 986J		
41113238	CL 1 DOMINO 386	
	CL 1 DOMINET 496 1ET	
	L1 DOMINETTE 850413	
	CL 1 DOMINO 640F	
	CL 1 DOMINO 824H	
	CL 1 DOMINETTE 6148F	
HH MISS ADVANCE 180L		
42151192	HH ADVANCE 6052F	
	HH MS ADV 824H 1ET	
	HH MS ADVANCE 3016C	

BW	Adj 205	NR	Adj 365	YR
84	666	99	1186	97

EPD's	
BW	+1.9
WW	+30
YW	+59
Milk	+21
M+G	+36
FT	+0.2
REA	+0.13
IMF	-0.10

♦ Solid combination of low birth weight, high Milk, and good REA EPD's. "376N" is a good performing bull out of an outstanding young cow.



HH Advance 379N

Holden Herefords

Lot 379N
HH ADVANCE 379N

BD: 1-18-03 ♦ Reg: 42370307 ♦ Tattoo: 379 ♦ Bull

CL 1 DOMINO 640F
CL 1 DOMINO 824H
CL 1 DOMINETTE 6148F
HH ADVANCE 0024K
42050495
CL 1 DOMINO 403 1ET
HH MISS ADVANCE 894H
HH MS ADV 4045D 4ET
CL 1 DOMINO 5131E
CL 1 DOMINO 986J
CL 1 DOMINET 496 1ET
HH MISS ADVANCE 153L
42151159
HH ADVANCE 740G
HH MISS ADVANCE 912J
HH MS ADVANCE 7024G

EPD's	
BW	+2.0
WW	+37
YW	+73
Milk	+22
M+G	+40
FT	+0
REA	+0.30
IMF	-0.18

BW	Adj 205	NR	Adj 365	YR
87	682	101	1293	105

♦ Heavily pigmented herd bull prospect with curve bending EPD's. "379N" has outstanding individual performance along with a +2.0 BW EPD, a +22 Milk EPD and a +.3 REA EPD. He is long, clean, smooth shouldered and looks like he would sure work on heifers. Dam is a moderate framed, easy doing 986 daughter with pigment on her teats and a beautiful udder. Every cow for 3 generations behind her has been a donor cow for us.

Holden Herefords

Lot 382N
HH ADVANCE 382N

BD: 1-18-03 ♦ Reg: 42370310 ♦ Tattoo: 382 ♦ Bull

HH ADVANCE 438D
CL 1 DOMINO 640F
CL 1 DOMINETTE 446
CL 1 DOMINO 824H
41011011
L1 DOMINO 920454
CL 1 DOMINETTE 6148F
CL 1 DOMNET 2103 1ET
L1 DOMINO 3704 1ET
HH ADVANCE 5029E
HH MS ADVANCE 3016C
HH MISS ADVANCE 761G
Reg
HH ADVANCE 078Z
HH MS ADVANCE 4035D
HH MISS ADV 9023Y

EPD's	
BW	+3.1
WW	+36
YW	+66
Milk	+18
M+G	+36
FT	+0.01
REA	+0.01
IMF	-0.04

BW	Adj 205	NR	Adj 365	YR
96	662	98	1188	97

♦ Consistent performer with great EPD's across the board.

Holden Herefords

Lot 386N
HH ADVANCE 386N

BD: 1-19-03 ♦ Reg: 42370314 ♦ Tattoo: 386 ♦ Bull

CL 1 DOMINO 640F
CL 1 DOMINO 824H
CL 1 DOMINETTE 6148F
HH ADVANCE 0024K
42050495
CL 1 DOMINO 403 1ET
HH MISS ADVANCE 894H
HH MS ADV 4045D 4ET
CL 1 DOMINO 166
CL 1 DOMINO 500E
CL 1 DOMINETTE 7013
HH MISS ADVANCE 1043L
42151365
CL 1 DOMINO 392
HH MS ADVANCE 6015F
HH MISS ADVANCE 507T

EPD's	
BW	+3.9
WW	+38
YW	+73
Milk	+17
M+G	+36
FT	+0
REA	+0.27
IMF	-0.17

BW	Adj 205	NR	Adj 365	YR
98	663	98	1217	99

♦ Well made, short marked 0024K son that combines excellent growth, milk, and carcass numbers into a complete package.



HH Advance 387N

Holden Herefords

Lot 387N
HH ADVANCE 387N

BD: 1-19-03 ♦ Reg: 42370315 ♦ Tattoo: 387 ♦ Bull

CL 1 DOMINO 640F
CL 1 DOMINO 824H
CL 1 DOMINETTE 6148F
HH ADVANCE 0024K
42050495
CL 1 DOMINO 403 1ET
HH MISS ADVANCE 894H
HH MS ADV 4045D 4ET
HH ADVANCE 6052F
HH ADVANCE 932J 1ET
HH MS ADVANCE 4054D
HH MSS ADVANCE 1120L 1ET
42151522
HH ADVANCE 249B
HH MISS ADVANCE 550E
HH MISS ADVANCE 390C

EPD's	
BW	+4.0
WW	+47
YW	+88
Milk	+23
M+G	+46
FT	+0
REA	+0.27
IMF	-0.08

BW	Adj 205	NR	Adj 365	YR
92	759	113	1308	107

♦ "387N" is an outstanding herd bull prospect that combines everything into one great package. He is well marked, thick, clean made, long and fancy. He is the #1 bull in the sale for NR, WW, YW, and M&G EPD's and tied for #1 on Milk EPD. He ranks in the top 5% of the breed for WW, YW, Milk, M&G, Scrotal, and REA EPD's. His maternal granddam was the 2nd high selling cow in our 2001 cow sale and produced herd bulls for Cooper Herefords, B&D Herefords, Harland Herefords, & Schlickau Herefords. Here is a powerful individual that backs it up with numbers and pedigree.

Holden Herefords

Lot 388N
HH ADVANCE 388N

BD: 1-19-03 ♦ Reg: 42370316 ♦ Tattoo: 388 ♦ Bull

CL 1 DOMINO 166
CL 1 DOMINO 5131E
CL 1 DOMINETTE 0046
CL 1 DOMINO 986J
41113238
CL 1 DOMINO 386
CL 1 DOMINET 496 1ET
L1 DOMINETTE 850413
CL 1 DOMINO 640F
CL 1 DOMINO 824H
CL 1 DOMINETTE 6148F
HH MISS ADVANCE 169L
42151182
KB L1 DOMINO 519
HH MS ADVANCE 8044H
HH MISS ADVANCE 454D

EPD's
BW +2.9
WW +32
YW +61
Milk +21
M+G +37
FT +.01
REA +.09
IMF -.12

BW Adj 205 NR Adj 365 YR
88 665 99 1179 96

♦ Well made 986 son that has balanced EPD's and good performance. Dam is a powerful young cow with a great udder and lots of pigment.

Holden Herefords

Lot 389N
HH ADVANCE 389N

BD: 1-19-03 ♦ Reg: 42370317 ♦ Tattoo: 389 ♦ Bull

CL1 DOMINO 824H
CL 1 DOMINETTE 6148F
HH ADVANCE 0024K
42050495
CL 1 DOMINO 403 1ET
HH MISS ADVANCE 894H
HH MS ADV 4045D 4ET
CL 1 DOMINO 392
HH ADVANCE 6052F
HH MISS ADVANCE 160A
HH MISS ADVANCE 137L
42151069
CL 1 DOMINO 484
HH MISS ADVANCE 730G
HH MISS ADVANCE 574E

EPD's
BW +4.3
WW +45
YW +87
Milk +20
M+G +43
FT +.01
REA +.26
IMF +.08

BW Adj 205 NR Adj 365 YR
95 718 107 1312 107

♦ Terrific herd bull prospect that brings it all together phenotypically and on paper. "389N" is 100% pigmented, long, deep bodied, thick topped, and clean made. He is the #2 bull in the sale on WW, YW, and M&G EPD's plus has outstanding individual performance. He is also probably the best carcass EPD bull in the sale. His dam was our top NR and YR heifer in the group and scanned the highest on marbling score of any animal we have ever ultrasounded. Maternal granddam was a great donor for us and is on the AHA's Top 200 Multi Trait Dam list. We ran out of light on picture day and didn't get 389 done. Make sure and look him up, he could be a great one.

Holden Herefords

Lot 392N
HH ADVANCE 392N

BD: 1-21-03 ♦ Reg: 42370321 ♦ Tattoo: 392 ♦ Bull

L1 DOMINO 95430
L1 DOMINO 97349
L1 DOMINETTE 93451
L1 DOMINO 99496
41170444
L1 DOMINETTE 95369
L1 DOMINETTE 93572
L1 DOMINETTE 93544
HH ADVANCE 438D
CL 1 DOMINO 6103F
CL 1 DOMINETTE 387
HH MISS ADVANCE 066K
42050278
EE 078 L1 304 1ET
HH MISS ADVANCE 613F
HH MISS ADVANCE 454D

EPD's
BW +3.2
WW +33
YW +61
Milk +10
M+G +27
FT +.0
REA -.03
IMF -.02

BW Adj 205 NR Adj 365 YR
96 644 96 1221 100

♦ "392N" is a deep ribbed, thick made bull by the 99496 sire. He should sire easy fleshing progeny with great dispositions.

Holden Herefords

Lot 393N
HH ADVANCE 393N

BD: 1-21-03 ♦ Reg: 42370322 ♦ Tattoo: 393 ♦ Bull

HH ADVANCE 872X
CL 1 DOMINO 166
CL 1 DOMINETTE 8049
CL 1 DOMINO 500E
19499162
CL 1 DOMINO 476
CL 1 DOMINETTE 7013
CL 1 DOMINETTE 527
CL 1 DOMINO 392
HH ADVANCE 6052F
HH MISS ADVANCE 160A
HH MS ADV 858H 1ET
41009449
CL 1 DOMINO 185
HH MS ADVANCE 3016C
HH MISS ADVANCE 165A

EPD's
BW +0.8
WW +28
YW +51
Milk +16
M+G +30
FT +.01
REA +.27
IMF -.09

BW Adj 205 NR Adj 365 YR
91 632 94 1141 101

♦ Moderate framed, well marked, thick made 500E son with only a +.8 BW EPD.

Holden Herefords

Lot 394N
HH ADVANCE 394N

BD: 1-21-03 ♦ Reg: 42370323 ♦ Tattoo: 394 ♦ Bull

HH ADVANCE 438D
CL 1 DOMINO 640F
CL 1 DOMINETTE 446
CL 1 DOMINO 824H
41011011
L1 DOMINO 920454
CL 1 DOMINETTE 6148F
CL 1 DOMNET 2103 1ET
CL 1 DOMINO 392
HH ADVANCE 6052F
HH MISS ADVANCE 160A
HH MS ADV 861H 1ET
41009452
CL 1 DOMINO 185
HH MS ADVANCE 3016C
HH MISS ADVANCE 165A

EPD's
BW +2.1
WW +31
YW +58
Milk +20
M+G +35
FT +.01
REA +.06
IMF -.04

BW Adj 205 NR Adj 365 YR
90 624 93 1190 97

♦ Moderate birth weight, high maternal 824H son out of a good cow family.

Holden Herefords

Lot 395N
HH ADVANCE 395N

BD: 1-21-03 ♦ Reg: 42370324 ♦ Tattoo: 395 ♦ Bull

CL 1 DOMINO 166
CL 1 DOMINO 5131E
CL 1 DOMINETTE 0046
CL 1 DOMINO 986J
41113238
CL 1 DOMINO 386
CL 1 DOMINET 496 1ET
L1 DOMINETTE 850413
CL 1 DOMINO 640F
CL 1 DOMINO 824H
CL 1 DOMINETTE 6148F
HH MISS ADVANCE 1088L
42151488
HH ADVANCE 6052F
HH MS ADVANCE 8016H
HH MS ADVANCE 5006E

EPD's
BW +2.4
WW +36
YW +67
Milk +20
M+G +38
FT +.02
REA +.17
IMF -.06

BW Adj 205 NR Adj 365 YR
87 710 106 1253 102

♦ "395N" is a top herd bull prospect that should work on heifers. He is very smooth shouldered with lots of neck extension, well marked and has good muscle expression. He is a strong performer with powerful balanced EPD's. His dam is a great young 824H daughter with a perfect udder.



HH Advance 399N



HH Miss Advance 339C
Granddam of Lots 312N, 399N, 3113N,
3121N, 3129N and 3153N

Holden Herefords

Lot 399N
HH ADVANCE 399N

BD: 1-21-03 ♦ Reg: 42370328 ♦ Tattoo: 399 ♦ Bull

CL 1 DOMINO 180L
42150351

CL 1 DOMINO 500E
HH ADVANCE 767 G 1ET
HH MISS ADVANCE 251B

CL 1 DOMINETTE 6113F
CL 1 DOMINETTE 0070
HH ADVANCE 6052F
HH ADVANCE 932J 1ET
HH MS ADVANCE 4054D

HH MISS ADVANCE 119L
42151051

HH ADVANCE 671F 1ET
HH MS ADV 870H 1ET
HH MISS ADVANCE 339C

EPD's	
BW	+3.5
WW	+44
YW	+83
Milk	+19
M+G	+41
FT	+0.2
REA	+0.10
IMF	+0.09

BW	Adj 205	NR	Adj 365	YR
93	717	107	1374	112

♦“399N” is a phenomenal herd bull prospect with tremendous eye appeal, length of body, muscle, and volume. He ranks in the top 15% of the breed or better on 7 different EPD's. He is the #1 bull in the sale on YR, 3rd highest on WW and YW EPD's, and tied for 3rd on M&G EPD. He is also positive on both REA and IMF EPD's. His maternal granddam is a flushmate to the dam of Lots 3113N, 3121N, 3129N, and 3153N and is a daughter of the 339C cow that has done so many great things for our cowherd.



HH Advance 3102N

Holden Herefords

Lot 3102N
HH ADVANCE 3102N

BD: 1-22-03 ♦ Reg: 42370132 ♦ Tattoo: 3102 ♦ Bull

CL 1 DOMINO 392
HH ADVANCE 6052F
HH MISS ADVANCE 160A

HH ADVANCE 145L
42151076

CL 1 DOMINO 484
HH MISS ADVANCE 766G
HH MS ADVANCE 5010E
HH ADVANCE 5029E

HH ADVANCE 836H
HH MS ADVANCE 5009E

HH MISS ADVANCE 003K
42050028

CL 1 DOMINO 500E
HH MS ADVANCE 7024G
HH MS ADVANCE 4043D

EPD's	
BW	+2.4
WW	+40
YW	+73
Milk	+16
M+G	+36
FT	+0.02
REA	+0.05
IMF	+0.14

BW	Adj 205	NR	Adj 365	YR
93	707	105	1330	108



HH Advance 395N

♦“3102N” is a top herd bull prospect by 145L. He is extremely long, clean fronted, and loaded with eye appeal. He is the 4th highest bull in the sale on Adj. 365 day wt and has outstanding spread from birth to yearling in his EPD's. He is also positive for both REA and IMF EPD's. Dam is a great young 836 daughter backed by two top donor cows.



HH Advance 3105N

Holden Herefords

Lot 3109N
HH ADVANCE 3109N

BD: 1-23-03 ♦ Reg: 42370139 ♦ Tattoo: 3109 ♦ Bull

HH ADVANCE 438D
CL 1 DOMINO 640F
CL 1 DOMINETTE 446
CL 1 DOMINO 824H
41011011 L1 DOMINO 920454
CL 1 DOMINETTE 6148F
CL 1 DOMNET 2103 1ET
GB L1 DOMINO 804
CL 1 DOMINO 403 1ET
L1 DOMINETTE 850413
HH MISS ADVANCE 841H
41009432 HH ADVANCE 078Z
HH MS ADVANCE 2008B
HH MISS ADVANCE 051Z

EPD's	
BW	+3.3
WW	+36
YW	+68
Milk	+21
M+G	+39
FT	+0.1
REA	-.02
IMF	-.09

BW	Adj 205	NR	Adj 365	YR
95	657	98	1223	100

♦ Solid made, well marked 824H son with good performance and EPD's.

Holden Herefords

Lot 3105N
HH ADVANCE 3105N 1ET

BD: 1-23-03 ♦ Reg: 42370135 ♦ Tattoo: 3105 ♦ Bull

CL 1 DOMINO 392
HH ADVANCE 6052F
HH MISS ADVANCE 160A
HH ADVANCE 932J 1ET
41114417 L1 DOMINO 910282
HH MS ADVANCE 4054D
HH MISS ADVANCE 218B
L1 DOMONO 3704 1ET
HH ADVANCE 5029E
HH MS ADVANCE 3016C
HH MS ADV 7005G 1ET
40007395 HH ADVANCE P224
HH MISS ADVANCE 507T
HH MISS ADVANCE N198

EPD's	
BW	+4.0
WW	+40
YW	+73
Milk	+18
M+G	+38
FT	+0.02
REA	+0.02
IMF	+0.06

BW	Adj 205	NR	Adj 365	YR
95	722	ET	1328	ET

♦ The 3 full brothers in this flush all combine outstanding growth, maternal, and carcass. "3105N" is a big, powerful, easy doing bull that is well marked. He is herd bull quality and would really sire a top set of feeder cattle. Dam is a role model brood cow with a great udder, lots of pigment, and plenty of fleshing ability. Full brothers sell as Lots 3146N and 3179N and a maternal brother sells as Lot 327N.

Holden Herefords

Lot 3110N
HH ADVANCE 3110N

BD: 1-23-03 ♦ Reg: 42370141 ♦ Tattoo: 3110 ♦ Bull

L1 DOMINO 95430
L1 DOMINO 97349
L1 DOMINETTE 93451
L1 DOMINO 99496
41170444 L1 DOMINO 93572
L1 DOMINETTE 95369
L1 DOMINETTE 93544
CL 1 DOMINO 166
CL 1 DOMINO 500E
CL 1 DOMINETTE 7013
HH MS ADV 7008G 1ET
40007396 HH ADVANCE 9012Y
HH MISS ADVANCE 251B
HH MISS ADVANCE 063Z

EPD's	
BW	+1.5
WW	+38
YW	+69
Milk	+16
M+G	+35
FT	+0
REA	+0.06
IMF	-.06

BW	Adj 205	NR	Adj 365	YR
90	709	105	1120	99

♦ Herd bull prospect out of one of our top cows. "3110N" is a well made bull that got sick on test. He combines a +1.5 WW EPD with excellent growth and maternal. His dam is a full sister to the 767 bull used at Cooper's and a top donor for us. A full sister to his dam topped our 2001 cow sale.

Holden Herefords

Lot 3106N
HH ADVANCE 3106N 1ET

BD: 1-23-03 ♦ Reg: 42370136 ♦ Tattoo: 3106 ♦ Bull

CL 1 DOMINO 484
HH ADVANCE 885H
HH MISS ADVANCE 391C
HH ADVANCE 041K 1ET
42050160 CL 1 DOMINO 392
HH MS ADVANCE 5009E
HH MISS ADVANCE 271B
L1 DOMINO 890061
CL 1 DOMINO 484
CL 1 DOMINETTE 761
HH MISS ADVANCE 741G
40007254 CL 1 DOMINO 185
HH MISS ADVANCE 552E
HH MISS ADVANCE 940Y

EPD's	
BW	+2.7
WW	+38
YW	+70
Milk	+23
M+G	+42
FT	+0.01
REA	-.12
IMF	+0.08

BW	Adj 205	NR	Adj 365	YR
90	684	ET	1244	ET

♦ "3106N" is a moderate framed bull with extra length and muscle. He is tied for the highest Milk EPD in the sale and has the 2nd highest M&G EPD. He is backed by a great cow family with all 3 females on the bottom side of his pedigree having been donor cows for us.

Holden Herefords

Lot 3111N
HH ADVANCE 3111N

BD: 1-23-03 ♦ Reg: 42370142 ♦ Tattoo: 3111 ♦ Bull

HH ADVANCE 438D
CL 1 DOMINO 640F
CL 1 DOMINETTE 446
CL 1 DOMINO 824H
41011011 L1 DOMINO 920454
CL 1 DOMINETTE 6148F
CL 1 DOMNET 2103 1ET
GB L1 DOMINO 804
CL 1 DOMINO 403 1ET
L1 DOMINETTE 850413
HH MS ADVANCE 7033G
40007331 HH ADVANCE 078Z
HH MISS ADVANCE 426D
HH MISS ADVANCE 925Y

EPD's	
BW	+3.1
WW	+35
YW	+67
Milk	+21
M+G	+38
FT	+0
REA	+0.07
IMF	-.10

BW	Adj 205	NR	Adj 365	YR
95	656	98	1182	96

♦ Well made bull with very balanced EPD's. Dam produced a herd bull for LeForce Herefords in our 2002 sale.

Holden
Herefords

Lot 3112N
HH ADVANCE 3112N

BD: 1-23-03 ♦ Reg: 42370143 ♦ Tattoo: 3112 ♦ Bull

CL 1 DOMINO 166
CL 1 DOMINO 5131E
CL 1 DOMINETTE 0046

CL 1 DOMINO 986J
41113238

CL 1 DOMINO 386
CL 1 DOMINET 496 1ET
L1 DOMINETTE 850413
CL 1 DOMINO 640F
CL 1 DOMINO 824H
CL 1 DOMINETTE 6148F

HH MISS ADVANCE 185L
42151199

HH ADVANCE 697F 1ET
HH MS ADV 859H 1ET
HH MISS ADVANCE 160A

EPD's	
BW	+2.1
WW	+35
YW	+65
Milk	+21
M+G	+38
FT	+0.1
REA	+0.14
IMF	-0.06

BW	Adj 205	NR	Adj 365	YR
88	704	105	1247	102

♦“3112N” is a moderate birthweight, high maternal package with excellent performance and growth. Dam is a big, long 824 daughter with a great udder.



HH Advance 3113N 1ET

Holden
Herefords

Lot 3113N
HH ADVANCE 3113N 1ET

BD: 1-24-03 ♦ Reg: 42370145 ♦ Tattoo: 3113 ♦ Bull

L1 DOMINO 95430
L1 DOMINO 97349
L1 DOMINETTE 93451

L1 DOMINO 99496
41170444

L1 DOMINO 93572
L1 DOMINETTE 95369
L1 DOMINETTE 93544
HH ADVANCE 403D 3ET
HH ADVANCE 671F 1ET
HH MISS ADVANCE 063Z

HH MS ADV 875H 1ET
41009465

HH ADVANCE 9012Y
HH MISS ADVANCE 339C
HH MISS ADVANCE 646U

EPD's	
BW	+3.1
WW	+36
YW	+66
Milk	+14
M+G	+32
FT	+0
REA	-0.02
IMF	-0.03

BW	Adj 205	NR	Adj 365	YR
88	749	ET	1292	ET

♦“3113N” is an outstanding herd bull prospect by the Miles City bull. He displays lot of dimension and muscle and is very well marked. He has a moderate birth weight and great performance numbers. Dam is a powerful donor cow that produced a herd sire for French's Double Tree Herefords, ID in our 2002 sale. She is also a daughter of the great 339 cow. Full brothers sell as Lots 3121N, 3129N, and 3153N.

Holden
Herefords

Lot 3115N
HH ADVANCE 3115N

BD: 1-24-03 ♦ Reg: 42370147 ♦ Tattoo: 3115 ♦ Bull

L1 DOMINO 95430
L1 DOMINO 97349
L1 DOMINETTE 93451

L1 DOMINO 99496
41170444

L1 DOMINO 93572
L1 DOMINETTE 95369
L1 DOMINETTE 93544
CL 1 DOMINO 640F
CL 1 DOMINO 824H
CL 1 DOMINETTE 6148F

HH MISS ADVANCE 001K
42050021

HH ADVANCE 5029E
HH MS ADVANCE 8042H
HH MS ADVANCE 5016E

EPD's	
BW	+1.3
WW	+32
YW	+61
Milk	+16
M+G	+33
FT	+0.1
REA	-0.10
IMF	-0.06

BW	Adj 205	NR	Adj 365	YR
85	682	101	1196	98

♦Light birth weight bull with good performance. “3115N” broke a horn just before we took yearling weights and it hurt his weight some. He is a very complete patterned bull that should work on heifers.

Holden
Herefords

Lot 3121N
HH ADVANCE 3121N 1ET

BD: 1-26-03 ♦ Reg: 42370154 ♦ Tattoo: 3121 ♦ Bull

L1 DOMINO 95430
L1 DOMINO 97349
L1 DOMINETTE 93451

L1 DOMINO 99496
41170444

L1 DOMINO 93572
L1 DOMINETTE 95369
L1 DOMINETTE 93544
HH ADVANCE 403D 3ET
HH ADVANCE 671F 1ET
HH MISS ADVANCE 063Z

HH MS ADV 875H 1ET
41009465

HH ADVANCE 9012Y
HH MISS ADVANCE 339C
HH MISS ADVANCE 646U

EPD's	
BW	+3.1
WW	+36
YW	+66
Milk	+14
M+G	+32
FT	+0
REA	-0.02
IMF	-0.03

BW	Adj 205	NR	Adj 365	YR
92	707	ET	1250	ET

♦“3121N” is a deep ribbed, easy doing bull with extra muscle and eye appeal. He is a strong herd bull prospect that combines a lot of good traits and a pedigree loaded with top cows. Full brothers sell as Lots 3113N, 3129N, and 3153N.

Holden
Herefords

Lot 3124N
HH ADVANCE 3124N

BD: 1-26-03 ♦ Reg: 42370157 ♦ Tattoo: 3124 ♦ Bull

CL 1 DOMINO 392
HH ADVANCE 6052F
HH MISS ADVANCE 160A

HH ADVANCE 145L
42151076

CL 1 DOMINO 484
HH MISS ADVANCE 766G
HH MS ADVANCE 5010E
HH ADVANCE 438D
CL 1 DOMINO 7120G ET
CL 1 DOMINETTE 0017

HH MISS ADVANCE 085K
42050308

XP L1 DOMINO 90085
HH MS ADV 878H 1ET
HH MISS ADVANCE 251B

EPD's	
BW	+0.7
WW	+38
YW	+67
Milk	+15
M+G	+35
FT	+0.1
REA	+0.04
IMF	+1.4

BW	Adj 205	NR	Adj 365	YR
85	722	107	1185	97

♦“3124N” has only a +.7 BW EPD but still ratioed 107 on NR. He is an excellent heifer bull prospect with balanced EPD's across the board. Dam is a moderate framed, perfect uddered cow that goes back to the 251B cow.

Holden Herefords

Lot 3127N
HH ADVANCE 3127N

BD: 1-27-03 ♦ Reg: 42370160 ♦ Tattoo: 3127 ♦ Bull

CL 1 DOMINO 392
HH ADVANCE 6052F
HH MISS ADVANCE 160A

CL 1 DOMINO 484
HH MISS ADVANCE 766G
HH MS ADVANCE 5010E
XP L1 DOMINO 90085
HH ADVANCE 8017H 1ET
HH MISS ADVANCE 251B

CL 1 DOMINO 403 1ET
HH MS ADVANCE 7093G
HH MS ADVANCE 4040D

HH ADVANCE 145L
42151076

HH MISS ADVANCE 0014K
42050472

EPD's	
BW	+4.1
WW	+37
YW	+71
Milk	+14
M+G	+33
FT	+0.01
REA	+0.0
IMF	+1.1

BW	Adj 205	NR	Adj 365	YR
96	644	96	1215	99

♦ "3127N" is a big, growth type bull that would sure sire an extra fancy, heavy pay weight set of baldy calves.



HH Advance 3129N 1ET

Holden Herefords

Lot 3129N
HH ADVANCE 3129N 1ET

BD: 1-27-03 ♦ Reg: 42370162 ♦ Tattoo: 3129 ♦ Bull

L1 DOMINO 95430
L1 DOMINO 97349
L1 DOMINETTE 93451

L1 DOMINO 93572
L1 DOMINETTE 95369
L1 DOMINETTE 93544
HH ADVANCE 403D 3ET
HH ADVANCE 671F 1ET
HH MISS ADVANCE 063Z

HH ADVANCE 9012Y
HH MISS ADVANCE 339C
HH MISS ADVANCE 646U

L1 DOMINO 99496
41170444

HH MS ADV 875H 1ET
41009465

EPD's	
BW	+3.1
WW	+36
YW	+66
Milk	+14
M+G	+32
FT	+0.0
REA	-0.02
IMF	-0.03

BW	Adj 205	NR	Adj 365	YR
89	705	ET	1196	ET

♦ Another heavy muscled, easy doing herd bull prospect out of the 875H X 99496 flush. "3129N" is well marked and easy to look at. Full brothers sell as Lots 3113N, 3121N, and 3153N.

Holden Herefords

Lot 3130N
HH ADVANCE 3130N 1ET

BD: 1-27-03 ♦ Reg: 42370165 ♦ Tattoo: 3130 ♦ Bull

CL 1 DOMINO 166
CL 1 DOMINO 5131E
CL 1 DOMINETTE 0046

CL 1 DOMINO 386
CL 1 DOMINET 496 1ET
L1 DOMINETTE 850413
L1 DOMINO 890061
CL 1 DOMINO 484
CL 1 DOMINETTE 761

CL 1 DOMINO 185
HH MISS ADVANCE 574E
HH MISS ADVANCE 024Z

CL 1 DOMINO 986J
41113238

HH MISS ADVANCE 730G
40007243

EPD's	
BW	+1.4
WW	+32
YW	+65
Milk	+23
M+G	+39
FT	+0.01
REA	+0.04
IMF	+0.02

BW	Adj 205	NR	Adj 365	YR
87	617	ET	1154	ET

♦ Calving ease bull that should produce fantastic daughters. "3130N" combines a +1.4 BW EPD with a +23 Milk EPD. Dam is a top donor cow that is on the AHA's Top 200 Multi Trait Cow List. She has an average NR of 105 and an average YR of 106.

Holden Herefords

Lot 3131N
HH ADVANCE 3131N

BD: 1-27-03 ♦ Reg: 42370167 ♦ Tattoo: 3131 ♦ Bull

L1 DOMINO 95430
L1 DOMINO 97349
L1 DOMINETTE 93451

L1 DOMINO 93572
L1 DOMINETTE 95369
L1 DOMINETTE 93544
CL 1 DOMINO 392
HH ADVANCE 6052F
HH MISS ADVANCE 160A

HH ADVANCE 249B
HH MS ADVANCE 5010E
HH MISS ADVANCE 305C

L1 DOMINO 99496
41170444

HH MISS ADVANCE 094K
42050320

EPD's	
BW	+2.6
WW	+35
YW	+64
Milk	+13
M+G	+31
FT	+0.0
REA	+0.07
IMF	+0.08

BW	Adj 205	NR	Adj 365	YR
90	667	99	1284	105

♦ Moderate birthweight bull with great yearling performance. "3131N" is a big sided, eye appealing bull out of a top cow family. Dam is a ¼ sister to our 145L herd sire.

Holden Herefords

Lot 3132N
HH ADVANCE 3132N

BD: 1-27-03 ♦ Reg: 42370168 ♦ Tattoo: 3132 ♦ Bull

HH ADVANCE 438D
CL 1 DOMINO 640F
CL 1 DOMINETTE 446

L1 DOMINO 920454
CL 1 DOMINETTE 6148F
CL 1 DOMNET 2103 1ET
HH ADVANCE 403D 3ET
HH ADVANCE 647F 1ET
HH MISS ADVANCE 063Z

CL 1 DOMINO 185
HH MS ADVANCE 3005C
HH MISS ADV 1018A

CL 1 DOMINO 824H
41011011

HH MISS ADVANCE 9095J
41114572

EPD's	
BW	+2.6
WW	+36
YW	+65
Milk	+20
M+G	+38
FT	+0.01
REA	-0.06
IMF	-0.02

BW	Adj 205	NR	Adj 365	YR
94	661	98	1198	98

♦ Moderate birth weight bull with solid EPD's. "3132N" is a consistent performer with good pigment and length of body.

Holden Herefords

Lot 3137N
HH ADVANCE 3137N

BD: 1-28-03 ♦ Reg: 42370173 ♦ Tattoo: 3137 ♦ Bull

CL 1 DOMINO 166
CL 1 DOMINO 5131E
CL 1 DOMINETTE 0046
CL 1 DOMINO 386
CL 1 DOMINET 496 1ET
L1 DOMINETTE 850413
HH ADVANCE 5029E
HH ADVANCE 836H
HH MS ADVANCE 5009E
HH ADVANCE 403D 3ET
HH MISS ADVANCE 659F
HH MISS ADVANCE 391C

EPD's	
BW	+2.2
WW	+32
YW	+57
Milk	+19
M+G	+35
FT	+0.03
REA	-0.01
IMF	-0.02

BW	Adj 205	NR	Adj 365	YR
87	687	102	1173	96

♦ Moderate framed, easy doing bull with balanced EPD's and solid performance.



HH Advance 3146N 1ET

Holden Herefords

Lot 3138N
HH ADVANCE 3138N

BD: 1-28-03 ♦ Reg: 42370174 ♦ Tattoo: 3138 ♦ Bull

CL 1 DOMINO 392
HH ADVANCE 6052F
HH MISS ADVANCE 160A
CL 1 DOMINO 484
HH MISS ADVANCE 766G
HH MS ADVANCE 5010E
CL 1 DOMINO 640F
CL DOMINO 824H
CL 1 DOMINETTE 6148F
KB L1 DOMINO 519
HH MS ADVANCE 8001H
HH MISS ADVANCE 497D

EPD's	
BW	+2.8
WW	+38
YW	+69
Milk	+19
M+G	+37
FT	+0.01
REA	-0.01
IMF	+0.07

BW	Adj 205	NR	Adj 365	YR
89	694	103	1277	104

♦ "3138N" is a big, classy, strong performing bull with excellent EPD's. Dam is a super uddered female with an average NR of 104.

Holden Herefords

Lot 3143N
HH ADVANCE 3143N

BD: 1-30-03 ♦ Reg: 42370182 ♦ Tattoo: 3143 ♦ Bull

HH ADVANCE 872X
CL 1 DOMINO 166
CL 1 DOMINETTE 8049
CL 1 DOMINO 476
CL 1 DOMINETTE 7013
CL 1 DOMINETTE 527
CL 1 DOMINO 392
HH ADVANCE 6052F
HH MISS ADVANCE 160A
CL 1 DOMINO 185
HH MS ADVANCE 3016C
HH MISS ADVANCE 165A

EPD's	
BW	+0.5
WW	+33
YW	+59
Milk	+17
M+G	+33
FT	+0.01
REA	+0.24
IMF	-0.10

BW	Adj 205	NR	Adj 365	YR
88	700	104	1294	106

♦ "3143N" is a long spined, big butted 500E son that combines a +.5 BW EPD with a 700 weaning weight and almost a 1300 lb yearling weight. He is a great combination of calving ease and performance and is short marked. He also has a big REA EPD and a +17 on Milk EPD.

Holden Herefords

Lot 3146N
HH ADVANCE 3146N 1ET

BD: 1-30-03 ♦ Reg: 42370185 ♦ Tattoo: 3146 ♦ Bull

CL 1 DOMINO 392
HH ADVANCE 6052F
HH MISS ADVANCE 160A
L1 DOMINO 910282
HH MS ADVANCE 4054D
HH MISS ADVANCE 218B
L1 DOMONO 3704 1ET
HH ADVANCE 5029E
HH MS ADVANCE 3016C
HH ADVANCE P224
HH MISS ADVANCE 507T
HH MISS ADVANCE N198

EPD's	
BW	+4.0
WW	+40
YW	+73
Milk	+18
M+G	+38
FT	+0.02
REA	+0.02
IMF	+0.06

BW	Adj 205	NR	Adj 365	YR
95	788	ET	1445	ET

♦ "3146N" is the performance bull of the sale. He had the heaviest Adj. 205 and Adj. 365 day weights of all the bulls. He is a big hipped, extra long bull with loads of volume. He is a powerful herd bull prospect that should also sire phenomenal daughters. We are retaining a ¼ in-herd use only semen interest in this great bull. Full brothers sell as Lots 3105N and 3179N.

Holden Herefords

Lot 3150N
HH ADVANCE 3150N

BD: 2-01-03 ♦ Reg: 42370190 ♦ Tattoo: 3150 ♦ Bull

CL 1 DOMINO 500E
HH ADVANCE 767 G 1ET
HH MISS ADVANCE 251B
CL 1 DOMINO 371
CL 1 DOMINETTE 6113F
CL 1 DOMINETTE 0070
CL 1 DOMINO 640F
CL 1 DOMINO 824H
CL 1 DOMINETTE 6148F
HH ADVANCE 6052F
HH MS ADV 800H 1ET
HH MS ADVANCE 4011D

EPD's	
BW	-0.3
WW	+35
YW	+67
Milk	+20
M+G	+37
FT	+0.01
REA	+0.03
IMF	+0.03

BW	Adj 205	NR	Adj 365	YR
68	636	94	1213	99

♦ "3150N" is a sure fire heifer bull whose BW and Calving Ease EPD's rank him in the top 5% of the breed. He has a +20 on Milk EPD, positive Carcass EPD's, and had over a 1200 lb yearling weight to go along with it.



HH Advance 3153N

Holden Herefords

Lot 3153N
HH ADVANCE 3153N 1ET

BD: 2-02-03 ♦ Reg: 42370194 ♦ Tattoo: 3153 ♦ Bull

L1 DOMINO 95430
L1 DOMINO 97349
L1 DOMINETTE 93451
L1 DOMINO 93572
L1 DOMINETTE 95369
L1 DOMINETTE 93544
HH ADVANCE 403D 3ET
HH ADVANCE 671F 1ET
HH MISS ADVANCE 063Z
HH MS ADV 875H 1ET
HH ADVANCE 9012Y
HH MISS ADVANCE 339C
HH MISS ADVANCE 646U

EPD's	
BW	+3.1
WW	+36
YW	+66
Milk	+14
M+G	+32
FT	+0
REA	-0.02
IMF	-0.03

BW	Adj 205	NR	Adj 365	YR
92	768	ET	1277	ET

♦ Powerful herd bull prospect that combines outstanding performance, a great cow family, and a superior phenotype. "3153N" is well marked, extra thick topped, and has lots of volume and eye appeal. With so many positives stacked in this package, this whole flush should be outstanding producers. Full brother sell as Lots 3113N, 3121N, and 3153N.

Holden Herefords

Lot 3156N
HH ADVANCE 3156N

BD: 2-03-03 ♦ Reg: 42370197 ♦ Tattoo: 3156 ♦ Bull

CL 1 DOMINO 500E
HH ADVANCE 767 G 1ET
HH MISS ADVANCE 251B
CL 1 DOMINO 371
CL 1 DOMINETTE 6113F
CL 1 DOMINETTE 0070
HH ADVANCE 6052F
HH ADVANCE 932J 1ET
HH MS ADVANCE 4054D
HH MISS ADVANCE 1077L
HH ADVANCE 403D 3ET
HH MISS ADVANCE 814H
HH MS ADVANCE 4028D

EPD's	
BW	+3.3
WW	+42
YW	+77
Milk	+18
M+G	+39
FT	+0.01
REA	+0.07
IMF	+0

BW	Adj 205	NR	Adj 365	YR
90	679	101	1250	102

♦ "3156N" is a strong performing bull with excellent EPD's across the board especially on growth. Dam is a very easy fleshing female with plenty of milk.

Holden Herefords

Lot 3157N
HH ADVANCE 3157N

BD: 2-03-03 ♦ Reg: 42370198 ♦ Tattoo: 3157 ♦ Bull

CL 1 DOMINO 392
HH ADVANCE 6052F
HH MISS ADVANCE 160A
HH ADVANCE 932J 1ET
41114417
L1 DOMINO 910282
HH MS ADVANCE 4054D
HH MISS ADVANCE 218B
L1 DOMONO 3704 1ET
HH ADVANCE 5029E
HH MS ADVANCE 3016C
HH MS ADVANCE 8018H
41009505
CL 1 DOMINO 392
HH MISS ADVANCE 517E
HH MISS ADVANCE 210B

EPD's	
BW	+3.7
WW	+42
YW	+78
Milk	+16
M+G	+37
FT	+0.02
REA	+0.08
IMF	+0.07

BW	Adj 205	NR	Adj 365	YR
91	707	105	1221	100

♦ Heavily pigmented, thick made bull with outstanding performance, growth, and carcass EPD's. "3157N" ranks in the top 10% of the breed for YW and Scrotal EPD's and the top 20% for WW and IMF EPD's.

Holden Herefords

Lot 3158N
HH ADVANCE 3158N

BD: 2-04-03 ♦ Reg: 42370199 ♦ Tattoo: 3158 ♦ Bull

L1 DOMINO 95430
L1 DOMINO 97349
L1 DOMINETTE 93451
L1 DOMINO 99496
41170444
L1 DOMINO 93572
L1 DOMINETTE 95369
L1 DOMINETTE 93544
CL 1 DOMINO 484
HH ADVANCE 885H
HH MISS ADVANCE 391C
HH MISS ADVANCE 084K
42050307
HH ADVANCE 6052F
HH MS ADVANCE 8053H
HH MS ADVANCE 5065E

EPD's	
BW	+2.2
WW	+35
YW	+64
Milk	+17
M+G	+35
FT	+0
REA	-0.08
IMF	+0

BW	Adj 205	NR	Adj 365	YR
89	698	104	1235	101

♦ Short marked, moderate birth weight bull with strong individual performance. "3158N" is very complete and has balanced EPD's.

Holden Herefords

Lot 3162N
HH ADVANCE 3162N

BD: 2-05-03 ♦ Reg: 42370204 ♦ Tattoo: 3162 ♦ Bull

CL 1 DOMINO 392
HH ADVANCE 6052F
HH MISS ADVANCE 160A
HH ADVANCE 932J 1ET
41114417
L1 DOMINO 910282
HH MS ADVANCE 4054D
HH MISS ADVANCE 218B
HH ADVANCE 526E
HH ADVANCE 740G
HH MISS ADVANCE 569E
HH MISS ADVANCE 9050J
41114529
CL 1 DOMINO 500E
HH MS ADVANCE 7090G
HH MISS ADVANCE 442D

EPD's	
BW	+2.4
WW	+39
YW	+73
Milk	+20
M+G	+39
FT	+0.02
REA	+0.16
IMF	-0.09

BW	Adj 205	NR	Adj 365	YR
90	699	104	1310	107

♦ "3162N" is a stout made, well marked herd bull prospect with a moderate birth weight and super individual performance. He ranks in the top 20% of the breed or better on YW, Milk, M&G, Scrotal, and REA EPD's. Dam has an average NR of 104 and maternal granddam was a top cow that produced the 181L bull in use at Granite Hills Herefords, TX.

Holden
Herefords

Lot 3175N
HH ADVANCE 3175N

BD: 2-11-03 ♦ Reg: 42370221 ♦ Tattoo: 3175 ♦ Bull

HH ADVANCE 872X
 CL 1 DOMINO 166
 CL 1 DOMINETTE 8049

CL 1 DOMINO 500E
 19499162

CL 1 DOMINO 476
 CL 1 DOMINETTE 7013
 CL 1 DOMINETTE 527
 HH ADVANCE 438D
 CL 1 DOMINO 6103F
 CL 1 DOMINETTE 387

HH MISS ADVANCE 9049J
 41114528

CL 1 DOMINO 392
 HH MISS ADVANCE 770G
 HH MISS ADVANCE 327C

EPD's	
BW	+2.0
WW	+35
YW	+65
Milk	+14
M+G	+32
FT	+0
REA	+0.30
IMF	-0.18

BW	Adj 205	NR	Adj 365	YR
93	685	102	1279	104

♦ "3175N" is a typical 500E son; moderate birth weight, strong growth, easy doing, lots of muscle, and a big REA EPD.

Holden
Herefords

Lot 3182N
HH ADVANCE 3182N

BD: 2-13-03 ♦ Reg: 42370228 ♦ Tattoo: 3182 ♦ Bull

CL 1 DOMINO 392
 HH ADVANCE 6052F
 HH MISS ADVANCE 160A

HH ADVANCE 932J 1ET
 41114417

L1 DOMINO 910282
 HH MS ADVANCE 4054D
 HH MISS ADVANCE 218B
 HH ADVANCE 438D
 CL 1 DOMINO 6103F
 CL 1 DOMINETTE 387

HH MISS ADVANCE 0081K
 42050647

CL 1 DOMINO 055 2ET
 HH MS ADVANCE 3054C
 HH MISS ADVANCE 813X

EPD's	
BW	+4.9
WW	+40
YW	+77
Milk	+14
M+G	+34
FT	+0.01
REA	+0.14
IMF	-0.06

BW	Adj 205	NR	Adj 365	YR
99	672	100	1278	104

♦ "3182N" is another short marked, heavy muscled, performance bull by 932J. If you like to sell heavy calves in the fall, these sons will do the job.

Holden
Herefords

Lot 3176N
HH ADVANCE 3176N

BD: 2-11-03 ♦ Reg: 42370222 ♦ Tattoo: 3176 ♦ Bull

L1 DOMINO 95461
 CL 1 DOMINO 888H 1ET
 CL 1 DOMINETTE 178

CL 1 DOMINO 0100K
 42044437

HH ADVANCE 438D
 CL 1 DOMINETTE 717G ET
 CL 1 DOMINETTE 7013
 HH ADVANCE 311C
 KB L1 DOMINO 519
 CL 1 DOMINETTE 6008

HH MS ADVANCE 8001H
 41009488

CL 1 DOMINO 185
 HH MISS ADVANCE 497D
 HH MISS ADV 9008Y

EPD's	
BW	+4.9
WW	+38
YW	+58
Milk	+16
M+G	+35
FT	-0.01
REA	-0.06
IMF	-0.03

BW	Adj 205	NR	Adj 365	YR
106	673	100	1199	98

♦ "3176N" is a big, long, short marked bull that would really fire on a different colored cow.



HH Ms Advance 7005G 1ET
Dam of Lots 327N, 3105N, 3146N and 3179N
Maternal Granddam of Lot 3184N

Holden
Herefords

Lot 3179N
HH ADVANCE 3179N 1ET

BD: 2-13-03 ♦ Reg: 42370224 ♦ Tattoo: 3179 ♦ Bull

CL 1 DOMINO 392
 HH ADVANCE 6052F
 HH MISS ADVANCE 160A

HH ADVANCE 932J 1ET
 41114417

L1 DOMINO 910282
 HH MS ADVANCE 4054D
 HH MISS ADVANCE 218B
 L1 DOMINO 3704 1ET
 HH ADVANCE 5029E
 HH MS ADVANCE 3016C

HH MS ADV 7005G 1ET
 40007395

HH ADVANCE P224
 HH MISS ADVANCE 507T
 HH MISS ADVANCE N198

EPD's	
BW	+4.0
WW	+40
YW	+73
Milk	+18
M+G	+38
FT	+0.02
REA	+0.02
IMF	+0.06

BW	Adj 205	NR	Adj 365	YR
94	780	ET	1351	ET

♦ "3179N" is another top herd bull prospect out of the 7005G X 932J flush. He is an outstanding performer that has the 2nd highest 205 day wt. and the 3rd highest 365 day wt. If you like long, deep sided, thick performance cattle with great maternal, look up these 3 full brothers. Full brothers sell as Lots 3105N and 3146N.



HH Advance 3179N 1ET



HH Advance 3184N

Holden Herefords

Lot 3184N
HH ADVANCE 3184N

BD: 2-16-03 ♦ Reg: 42370331 ♦ Tattoo: 3184 ♦ Bull

CL 1 DOMINO 500E
HH ADVANCE 767 G 1ET
HH MISS ADVANCE 251B

CL1 DOMINO 180L
42150351

CL 1 DOMINO 371
CL 1 DOMINETTE 6113F
CL 1 DOMINETTE 0070
XP L1 DOMINO 90085

HH ADVANCE 8017H 1ET
HH MISS ADVANCE 251B

HH MISS ADVANCE 1131L
42151534

HH ADVANCE 5029E
HH MS ADV 7005G 1ET
HH MISS ADVANCE 507T

EPD's	
BW	+2.7
WW	+44
YW	+78
Milk	+17
M+G	+40
FT	+0.1
REA	-0.3
IMF	+0.8

BW	Adj 205	NR	Adj 365	YR
92	718	107	1312	107

♦ Outstanding herd bull prospect with goggle eyes, muscle expression, length, and eye appeal. "3184N" is an outstanding performance bull that ratioed 107 at weaning and yearling. He ranks in the top 20% of the breed or better for Calving Ease Direct, WW, YW, M&G, Scrotal, and IMF EPD's and is well below breed average for BW EPD. Maternal granddam is the 7005G cow that produced Lots 327N, 3105N, 3146N, and 3179N.

Holden Herefords

Lot 3186N
HH ADVANCE 3186N

BD: 2-18-03 ♦ Reg: 42370231 ♦ Tattoo: 3186 ♦ Bull

CL 1 DOMINO 640F
CL1 DOMINO 824H
CL 1 DOMINETTE 6148F

HH ADVANCE 0024K
42050495

CL 1 DOMINO 403 1ET
HH MISS ADVANCE 894H
HH MS ADV 4045D 4ET
CL 1 DOMINO 500E

HH ADVANCE 8060H 1ET
HH MISS ADVANCE 182A

HH MISS ADVANCE 1013L
42151270

KB L1 DOMINO 519
HH MISS ADVANCE 989J
HH MS ADVANCE 4012D

EPD's	
BW	+2.6
WW	+43
YW	+78
Milk	+19
M+G	+40
FT	+0
REA	+0.28
IMF	-0.15

BW	Adj 205	NR	Adj 365	YR
86	735	109	1284	105

♦ "3186N" is a moderate framed, moderate birth weight bull that is a top herd sire prospect. He is a bull that has tons of potential and everything right about him. He is 100% pigmented, thick topped, square hipped, and very stylish. He combines absolutely outstanding individual performance with EPD's that rank him in the top 17% of the breed for CED, WW, and Milk, and the top 10% for YW, M&G, Scrotal, and REA.

Holden Herefords

Lot 3190N
HH ADVANCE 3190N

BD: 2-21-03 ♦ Reg: 42370236 ♦ Tattoo: 3190 ♦ Bull

L1 DOMINO 95461
CL 1 DOMINO 888H 1ET
CL 1 DOMINETTE 178

CL 1 DOMINO 0124K 1ET
42044461

HH ADVANCE 011Z
CL 1 DOMINET 357
CL 1 DOMINET 885 2ET
CL 1 DOMINO 166

CL 1 DOMINO 500E
CL 1 DOMINETTE 7013

HH MISS ADVANCE 956J
41114440

CL 1 DOMINO 392
HH MISS ADVANCE 583E
HH MISS ADVANCE 284B

EPD's	
BW	+4.0
WW	+37
YW	+70
Milk	+15
M+G	+33
FT	+0
REA	+0.27
IMF	-0.11

BW	Adj 205	NR	Adj 365	YR
99	742	107	1308	104

♦ "3190N" is another top performance bull that would really produce some heavy steers and top replacements. Note his +.27 REA EPD also. Dam has an average NR of 102 and an average YR of 105. Maternal granddam was a top donor cow for us and one of the top YW EPD cows we ever raised.

Holden Herefords

Lot 3192N
HH ADVANCE 3192N

BD: 2-23-03 ♦ Reg: 42370238 ♦ Tattoo: 3192 ♦ Bull

CL 1 DOMINO 392
HH ADVANCE 6052F
HH MISS ADVANCE 160A

HH ADVANCE 932J 1ET
41114417

L1 DOMINO 910282
HH MS ADVANCE 4054D
HH MISS ADVANCE 218B
CL 1 DOMINO 640F

CL 1 DOMINO 824H
CL 1 DOMINETTE 6148F

HH MISS ADVANCE 020K
42050120

KB L1 DOMINO 519
HH MISS ADVANCE 876H
HH MISS ADVANCE 333C

EPD's	
BW	+4.1
WW	+43
YW	+80
Milk	+17
M+G	+39
FT	+0.1
REA	+0.23
IMF	-0.07

BW	Adj 205	NR	Adj 365	YR
92	716	103	1230	98

♦ "3192N" is another strong performing, big REA, WW, and YW EPD 932J son with good pigment and muscle.



HH Advance 3186N



HH Advance 3196N

Holden Herefords

Lot 3194N
HH ADVANCE 3194N

BD: 2-25-03 ♦ Reg: 42370240 ♦ Tattoo: 3194 ♦ Bull

CL 1 DOMINO 640F
CL 1 DOMINO 824H
CL 1 DOMINETTE 6148F
HH ADVANCE 0024K
42050495
CL 1 DOMINO 403 1ET
HH MISS ADVANCE 894H
HH MS ADV 4045D 4ET
CL 1 DOMINO 484
HH ADVANCE 885H
HH MISS ADVANCE 391C
HH MISS ADVANCE 162L
42151175
HH ADVANCE 6052F
HH MISS ADVANCE 918J 1ET
HH MS ADVANCE 4054D

EPD's	
BW	+3.1
WW	+38
YW	+79
Milk	+19
M+G	+38
FT	+0
REA	+0.20
IMF	-0.05

BW	Adj 205	NR	Adj 365	YR
89	648	94	1305	104

♦ "3194N" is a coon-eyed, well made 0024K son with a ton of future. His dam got very sick after his birth and he was basically an orphan for a few months. Once he got on feed, he really took off and looks great now. He is below breed average for BW EPD but ranks in the top 20% of the breed or better for YW, Milk, M&G, and REA EPD's. His maternal granddam was a flushmate to the 932J herd sire.

Holden Herefords

Lot 3195N
HH ADVANCE 3195N

BD: 2-25-03 ♦ Reg: 42370241 ♦ Tattoo: 3195 ♦ Bull

CL 1 DOMINO 392
HH ADVANCE 6052F
HH MISS ADVANCE 160A
HH ADVANCE 145L
42151076
CL 1 DOMINO 484
HH MISS ADVANCE 766G
HH MS ADVANCE 5010E
CL 1 DOMINO 640F
CL 1 DOMINO 824H
CL 1 DOMINETTE 6148F
HH MISS ADVANCE 037K
42050147
HH ADVANCE 5029E
HH MS ADVANCE 8023H
HH MISS ADVANCE 550E

EPD's	
BW	+4.1
WW	+34
YW	+66
Milk	+19
M+G	+36
FT	+0.02
REA	-0.04
IMF	+0.08

BW	Adj 205	NR	Adj 365	YR
95	666	96	1272	101

♦ "3195N" is a long bodied, smooth shouldered bull that is clean made. He has a balanced set of EPD's and is out of a super young cow.

Holden Herefords

Lot 3196N
HH ADVANCE 3196N

BD: 2-26-03 ♦ Reg: 42370242 ♦ Tattoo: 3196 ♦ Bull

CL 1 DOMINO 392
HH ADVANCE 6052F
HH MISS ADVANCE 160A
HH ADVANCE 932J 1ET
41114417
L1 DOMINO 910282
HH MS ADVANCE 4054D
HH MISS ADVANCE 218B
HH ADVANCE 526E
HH ADVANCE 740G
HH MISS ADVANCE 569E
HH MISS ADVANCE 9082J
41114559
HH ADVANCE 3001C
HH MS ADVANCE 7072G
HH MISS ADVANCE 001Z

EPD's	
BW	+1.5
WW	+39
YW	+74
Milk	+18
M+G	+37
FT	+0.01
REA	+0.12
IMF	+0.03

BW	Adj 205	NR	Adj 365	YR
85	717	103	1306	104

♦ "3196N" is a super herd bull prospect that combines everything into an outstanding package. He has an 85 lb. birth weight and only a +1.5 BW EPD along with a 717 lb. 205 day wt and over a 1300 lb. 365 day wt. To go along with that, he displays tremendous muscle expression, volume, pigment, correctness, and eye appeal along with being very moderate framed. If you are looking for a bull to produce club calves, he is a top prospect. Dam is a superb young cow that goes back to the same cow family as the 249B herd sire we used. A full brother sold in last year's sale to Ginther Herefords, MT.

Holden Herefords

Lot 3199N
HH ADVANCE 3199N

BD: 3-01-03 ♦ Reg: 42370245 ♦ Tattoo: 3199 ♦ Bull

L1 DOMINO 95461
CL 1 DOMINO 888H 1ET
CL 1 DOMINETTE 178
CL 1 DOMINO 0124K 1ET
42044461
HH ADVANCE 011Z
CL 1 DOMINET 357
CL 1 DOMINET 885 2ET
HH ADVANCE 438D
CL 1 DOMINO 6103F
CL 1 DOMINETTE 387
HH MISS ADVANCE 980J
41114462
CL 1 DOMINO 403 1ET
HH MS ADVANCE 7033G
HH MISS ADVANCE 426D

EPD's	
BW	+3.6
WW	+31
YW	+58
Milk	+14
M+G	+30
FT	+0
REA	+0
IMF	+0.01

BW	Adj 205	NR	Adj 365	YR
98	695	100	1186	94

♦ "3199N" is a very complete bull with a lot of good traits. He was sick for the first month on feed and it hurt his yearling weight some.

Holden Herefords

Lot 3200N
HH ADVANCE 3200N

BD: 3-06-03 ♦ Reg: 42370247 ♦ Tattoo: 3200 ♦ Bull

CL 1 DOMINO 392
HH ADVANCE 6052F
HH MISS ADVANCE 160A
HH ADVANCE 145L
42151076
CL 1 DOMINO 484
HH MISS ADVANCE 766G
HH MS ADVANCE 5010E
HH ADVANCE 403D 3ET
HH ADVANCE 671F 1ET
HH MISS ADVANCE 063Z
HH MS ADV 875H 1ET
41009465
HH ADVANCE 9012Y
HH MISS ADVANCE 339C
HH MISS ADVANCE 646U

EPD's	
BW	+2.0
WW	+34
YW	+64
Milk	+17
M+G	+34
FT	n/a
REA	n/a
IMF	n/a

BW	Adj 205	NR	Adj 365	YR
84	650	94	1210	96

♦ Nice patterned bull with a lot of future. "3200N" has a moderate 84 lb birth weight and is out of a great cow. He is just a little young.

Holden
Herefords

Lot 3201N
HH ADVANCE 3201N

BD: 3-07-03 ♦ Reg: 42370248 ♦ Tattoo: 3201 ♦ Bull

L1 DOMINO 95461
CL 1 DOMINO 888H 1ET
CL 1 DOMINETTE 178
CL 1 DOMINO 0124K 1ET
42044461
HH ADVANCE 011Z
CL 1 DOMINET 357
CL 1 DOMINET 885 2ET
HH ADVANCE 403D 3ET
HH ADVANCE 671F 1ET
HH MISS ADVANCE 063Z
HH MISS ADVANCE 9094J
41114571
HH ADVANCE 3001C
HH MS ADVANCE 6012F
HH MISS ADVANCE 201B

EPD's	
BW	+3.7
WW	+35
YW	+59
Milk	+12
M+G	+30
FT	+0
REA	-0.06
IMF	+0

BW	Adj 205	NR	Adj 365	YR
94	694	100	1254	100

♦ "3201N" is a solid performer with good muscle, volume, and pigment. He is a quality bull that has done really well for his age.



Jay D. and Kelli Evans

Holden
Herefords

Lot 3203N
HH ADVANCE 3203N

BD: 3-17-03 ♦ Reg: 42370250 ♦ Tattoo: 3203 ♦ Bull

CL 1 DOMINO 640F
CL1 DOMINO 824H
CL 1 DOMINETTE 6148F
HH ADVANCE 0024K
42050495
CL 1 DOMINO 403 1ET
HH MISS ADVANCE 894H
HH MS ADV 4045D 4ET
CL 1 DOMINO 5131E
CL 1 DOMINO 986J
CL 1 DOMINET 496 1ET
HH MISS ADVANCE 199L
42151254
HH ADVANCE 5029E
HH MISS ADVANCE 999J
HH MS ADVANCE 6015F

EPD's	
BW	+2.3
WW	+39
YW	+77
Milk	+20
M+G	+40
FT	+0
REA	+0.21
IMF	-0.16

BW	Adj 205	NR	Adj 365	YR
85	736	106	1290	102

♦ "3203N" is a super young bull with 100% pigment, muscle, and style. He has tremendous performance numbers backed by outstanding EPD's that rank him in the top 12% of the breed for YW, Milk, M&G, Scrotal, and REA and the top 25% for BW EPD.



Holden
Herefords

Lot 3204N
HH ADVANCE 3204N

BD: 4-05-03 ♦ Reg: 42370251 ♦ Tattoo: 3204 ♦ Bull

L1 DOMINO 95430
L1 DOMINO 97349
L1 DOMINETTE 93451
L1 DOMINO 99496
41170444
L1 DOMINO 93572
L1 DOMINETTE 95369
L1 DOMINETTE 93544
L1 DOMINO 860274
XP L1 DOMINO 90085
L1 DOMINETTE 850601
HH MS ADV 898H 1ET
41009486
HH ADVANCE 9012Y
HH MISS ADVANCE 251B
HH MISS ADVANCE 063Z

EPD's	
BW	+3.3
WW	+38
YW	+68
Milk	+13
M+G	+32
FT	+0
REA	-0.01
IMF	+0.03

BW	Adj 205	NR	Adj 365	YR
98	727	105	1218	N/A

♦ "3204N" is a classy herd bull prospect with excellent pigment, muscle, and volume. He is a maternal brother to the Lot 321N bull. Dam is a top donor with an average NR of 110 and an average YR of 109.



Holden Herefords



Brooke Age 14 - Brad - Age 11



Jack & Tresha Holden



Molly



Bubba



Thanks for coming!

Holden
Herefords